

● 营业本部

地址：大连市甘井子区东海路78号
 电话：0411-62658886 62658168
 传真：0411-86586556
 邮编：116033
 E-mail: stech@papcdl.panasonic.cn

● Sales & Marketing Division

Add: No. 78 Donghai Road, Gan Jingzi
 District Dalian, P.R.China
 Tel: 0411-62658886 62658168
 Fax: 0411-86586556
 P.C.: 116033
 E-mail: stech@papcdl.panasonic.cn

● 海外营业部

地址：大连市甘井子区东海路78号
 电话：0411-86580966
 传真：0411-86586556
 邮编：116033
 E-mail: info@papcdl.panasonic.cn

● Overseas Sales Department

Add: No. 78 Donghai Road, Gan Jingzi
 District Dalian, P.R.China
 Tel: 0411-86580966
 Fax: 0411-86586556
 P.C.: 116033
 E-mail: info@papcdl.panasonic.cn

● 广东事务所 (涡旋产品)

地址：中国广东省珠海市吉大海滨南路
 光大国际贸易中心3006室
 电话：0756-3827320
 传真：0756-3827333
 邮编：519015
 E-mail: zhoffice@papcdl.panasonic.cn

● Zhuhai Office(Scroll Products)

Add: 3006 Room, Everbright International
 Trade Center South JiDa HaiBin Road
 ZhuHai Guang Dong Province, China
 Tel: 0756-3827320
 Fax: 0756-3827333
 P.C.: 519015
 E-mail: zhoffice@papcdl.panasonic.cn

样本中所有产品图片仅供参考，以实际订货产品为准。

All of the pictures in catalogues are only for your reference and subject to the actual products.

参数如有变动恕不另行通知

Parameters are subject to change without notice.



空调专用涡旋压缩机 Scroll Compressor for Air-conditioning Application



Panasonic®

松下压缩机(大连)有限公司

Panasonic Appliances Compressor (Dalian) Co.,Ltd.

地址：大连市甘井子区东海路78号
 Add: No.78 Donghai Road, Gan Jingzi District, Dalian, P.R.China
 电话Tel: +86-411-62658173,62658168
 传真Fax: +86-411-86586556 邮编P.C.: 116033
 网址Web: papcdl.panasonic.cn
 电子邮箱E-mail: stech@papcdl.panasonic.cn



松下压缩机(大连)有限公司

Panasonic Appliances Compressor (Dalian) Co.,Ltd.

公司简介 Profile



公司厂房 Company workshop



研发中心 R&D Center

公司名称: 松下压缩机(大连)有限公司

Company Name: Panasonic Appliances Compressor (Dalian) Co.,Ltd.

投资总额: 95亿日元

Total Investment Amount: USD 88 Million

占地面积: 11.65万平方米

Occupied Area: 116,500 square meters

建筑面积: 7.1万平方米

Building Areas: 71,000 square meters

员工人数: 1700人

Employees: 1700

公司签约日: 1994年8月18日

Date of Signing the Contract: Aug. 18, 1994

公司成立日: 1994年9月15日

Date of Getting Business Certificate: Sep. 15, 1994

公司开业日: 1995年10月18日

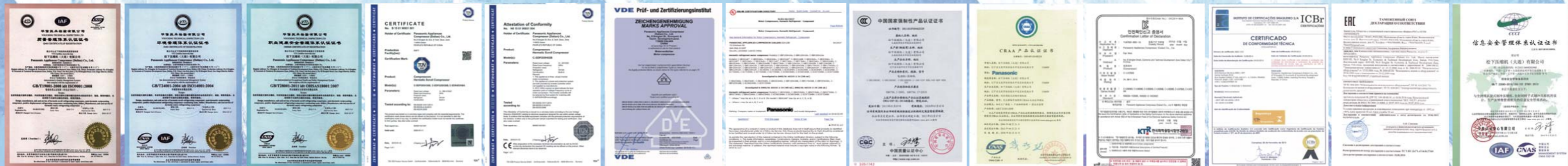
Date of Opening Ceremony: Oct. 18, 1995

公司荣誉 Certificates Award



1997年10月荣获先进技术确认证书;
 1997年11月通过ISO9002质量管理体系认证;
 1998年3月通过ISO14001国际环境管理体系认证;
 1998年9月荣获高新技术企业认定证书;
 1998年10月荣获“AAA”级资信等级证书;
 1999年3月通过CCEE中国电工产品安全认证;
 2000年5月通过欧洲“TUV”产品认证;
 2000年12月参与制定《活塞式单级制冷压缩机》及《全封闭涡旋式制冷压缩机》国家标准;
 2002年9月通过“CCC”产品认证;
 2002年10月通过ISO9001 2000版质量管理体系认证;
 2003年8月通过日本“强度试验适用承认书”(NO. 15强23);
 2003年10月通过美国“UL”产品认证;
 2004年6月通过“VDE”产品认证;
 2004年10月通过“CE”产品认证;
 2005年9月通过OHSAS18001职业健康安全管理体系认证;
 2006年8月通过CRAA产品认证;
 2007年12月通过泰国TIS认证;
 2009年12月通过韩国KC认证;
 2011年3月通过CB认证;
 2013年9月获得巴西INMETRO认证;
 2016年6月获得俄罗斯EAC认证;
 2018年5月通过ISO27001信息安全管理体认证;
 2018年5月获得PED认证。

Certificate of “Advanced Technology” in October 1997.
 ISO 9002 Quality Management System in November 1997.
 ISO 14001 international environment management system certificate in March 1998.
 Certificate of “High-Tech Enterprise” in September 1998.
 “AAA” level reputation certificate in October 1998.
 Certificate of Conformity for Electrical Equipment in March 1999(CCEE).
 “TUV” product certificate in May 2000.
 And was conferred with the honor of Dalian Advanced Technology Corporation.
 Besides, several national compressor standards were drawn out by us, thus
 We win high prize in compressor industry both domestically and abroad.
 Certificate for China Compulsory Product Certification in September 2002(CCC).
 ISO 9001 Quality Management System(2000) in October 2002.
 Approval of Japanese “Intensity Test Certificate” in August 2003(No.15 Intensity 23)
 “UL” product certificate in October 2003.
 “VDE” product certificate in June 2004.
 “CE” product certificate in October 2004.
 OHSAS18001:1999 Certificate in September 2005.
 “CRAA” product certificate in August 2006.
 “TIS” product certificate in December 2007.
 Korean “KC” product certificate in December 2009.
 “CB” product certificate in March 2011.
 “INMETRO” Product Certificate In September 2013.
 “EAC” Product Certificate In June 2016.
 ISO27001 Information Security Management System Certificate in May 2018.
 “PED” Product Certificate In May 2018.



→ 目录 Contents

| | |
|--|----|
| B系列涡旋压缩机 B Series Scroll Compressors | 4 |
| * 结构特点及产品型谱 Structural characteristics and Product Line-up | |
| * 技术参数 Technical parameters | |
| * 外观图 Graph | |
| C系列涡旋压缩机 C Series Scroll Compressors | 14 |
| * 结构特点及产品型谱 Structural characteristics and Product Line-up | |
| * 技术参数 Technical parameters | |
| * 外观图 Graph | |
| D系列涡旋压缩机 D Series Scroll Compressors | 22 |
| * 结构特点及产品型谱 Structural characteristics and Product Line-up | |
| * 技术参数 Technical parameters | |
| * 外观图 Graph | |
| E系列涡旋压缩机 E Series Scroll Compressors | 28 |
| * 结构特点及产品型谱 Structural characteristics and Product Line-up | |
| * 技术参数 Technical parameters | |
| * 外观图 Graph | |
| 并联系列 Tandem Series | 33 |
| 运转范围 Operating Envelope | 34 |
| 使用标准与使用极限条件 Application Standard & Limit | 35 |
| 压缩机命名规则 Model Nomenclatures | 40 |
| 包装 Packing | 42 |

→ 公司产品 Products

| | |
|------------------------------|--|
| 3.5 ~ 7HP C-SB 系列涡旋压缩机 | 3.5 ~ 7HP C-SB Series Scroll Compressors |
| 8 ~ 15HP C-SC 系列涡旋压缩机 | 8 ~ 15HP C-SC Series Scroll Compressors |
| C-SD 系列涡旋压缩机 | C-SD Series Scroll Compressors |
| C-SE 系列涡旋压缩机 | C-SE Series Scroll Compressors |
| C-SW 系列卧式涡旋压缩机 | C-SW Series Horizontal Scroll Compressors |
| 15F系列CO ₂ 双转子式压缩机 | 15F Series CO ₂ Twin Rotary Compressors |
| 20F系列CO ₂ 双转子式压缩机 | 20F Series CO ₂ Twin Rotary Compressors |
| 33F系列CO ₂ 双转子式压缩机 | 33F Series CO ₂ Twin Rotary Compressors |



→ 产品特点 Products Features

- | | |
|-------------------|---|
| 1. 低噪声&低振动 | Low sound level & Low vibration |
| 2. 紧凑型&轻量设计 | Compact & Light weight |
| 3. 支持各种不同的电源制式 | Support a wide variety of power source |
| 4. 采用环保制冷剂 | Application of environment-friendly refrigerant |
| 5. 独创双转子双级压缩结构 | Innovative twin-rotary two-stage structure |
| 6. 直流变频驱动 | Inverter-driven motor |
| 7. 高可靠性, 经过市场长期验证 | High reliability proven in decades of market applications |

■ B系列涡旋压缩机 C-SB Series

特点

无柔性调节、高精度配合；
采用高低压隔板，降低定涡旋应变及形成内部排气消音；
采用齿顶密封圈，密封动定涡旋因轴向力产生的脱啮间隙，大大提高能效；
机构简单、稳定可靠。

Features:

Fixed eccentric design, high precision assembling
Decreasing the gradient of fixed scroll and forming an inner discharge muffle
PPS tip seal, improve the sealing performance and efficiency
Simple structure, high reliability

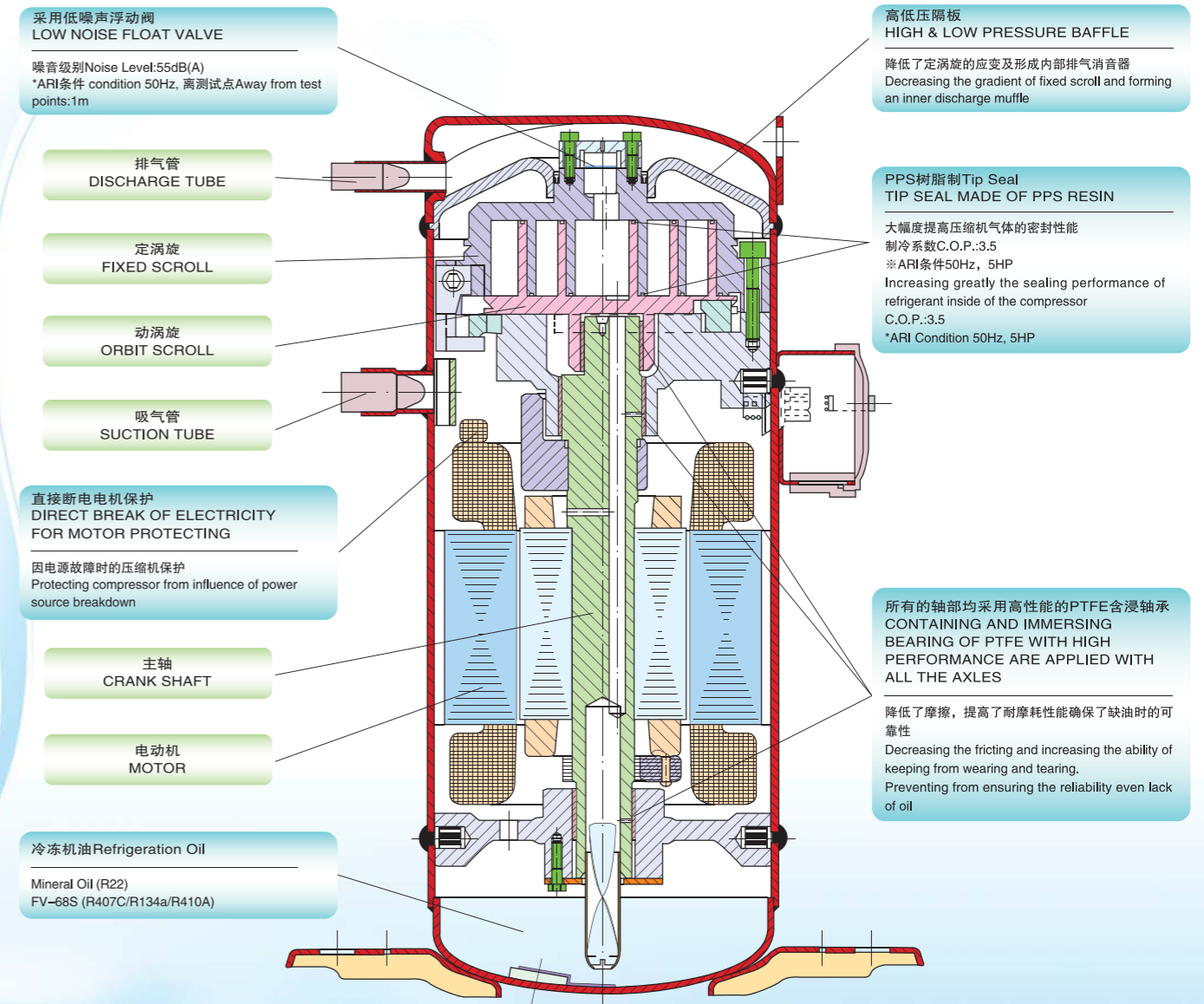


产品型谱 Product Line-up

| 制冷剂 Refrigerant | 电制 Power Supply | 电源 Phase | 额定功率Output(HP) | | | | | | | | | | | | | | | | | |
|--------------------|------------------------------|-------------|----------------|-----|-----|-----|-----|---|-----|-----|-----|-----|-----|-----|---|-----|-----|-----|---|-----|
| | | | 3 | 3.1 | 3.5 | 3.6 | 3.7 | 4 | 4.2 | 4.3 | 4.4 | 4.5 | 4.6 | 4.9 | 5 | 5.2 | 5.5 | 5.8 | 6 | 6.8 |
| R410A | 50Hz 380-415V /60Hz 440-460V | 3 Phase | | | ★ | | ★ | ★ | | | | | ★ | ★ | | ★ | | ★ | ★ | ★ |
| | 50Hz 220-240V | 1 Phase | | | ● | | ● | | | | | ● | | | ● | | | | | |
| | 60Hz 208-230V | 3 Phase | | | ★ | | ★ | ★ | | | | ★ | | ★ | | ★ | | ★ | ★ | ★ |
| | | 1 Phase | | ● | ● | | ● | ● | | ● | | ● | | ● | | ● | | ● | ● | ● |
| 60Hz 380V | 3 Phase | ★ | | ★ | | ★ | ★ | | | | ★ | | ★ | | ★ | | ★ | ★ | ★ | |
| R407C | 50Hz 380-415V /60Hz 440-460V | 3 Phase | | | ★ | | ★ | ★ | | ★ | ★ | ★ | | ★ | ★ | | ★ | ★ | ★ | |
| | 50Hz 220-240V | 3 Phase | | | ★ | | ★ | | | | | | ★ | | | | ★ | | | |
| | | 1 Phase | | | ● | | ● | | | | | ● | | ● | | ● | | | | |
| | 60Hz 208-230V | 3 Phase | | ★ | ★ | | ★ | | | | | ★ | | ★ | | ★ | | ★ | | |
| 60Hz 380V | | 3 Phase | | ★ | ★ | | ★ | | | | ★ | | ★ | | ★ | | ★ | | | |
| R22 | 50Hz 380-415V /60Hz 440-460V | 3 Phase | | ★ | ★ | | ★ | ★ | | ★ | ★ | ★ | ★ | ★ | ★ | ★ | | ★ | ★ | |
| | 50Hz 220-240V | 3 Phase | | | | | ★ | | | | | | ★ | | | | | ★ | | |
| | | 1 Phase | | ● | ● | ● | ● | | | | | ● | | ● | | ● | | ● | | |
| | 60Hz 208-230V | 3 Phase | | ★ | ★ | | ★ | | | | | ★ | | ★ | | ★ | | ★ | | ★ |
| | | 1 Phase | | | ● | | ● | | | | | ● | | ● | | ● | | ● | | ● |
| 60Hz 380V | 3 Phase | | ★ | ★ | | ★ | | | | | ★ | | ★ | | ★ | | ★ | | ★ | |

注：如使用其它制冷剂或有其他应用，请与我公司联系确认。
For more information about other refrigerants and application, please contact with us.

■ B系列涡旋压缩机内部结构图 C-SB Series Components



使用工质 Refrigerant R410A/R407C/R22/R134a/R32

*如需采用其他制冷剂，请与我公司联系确认。
For more information about other refrigerants products, please contact with us.



■ B系列涡旋压缩机-R22 C-SB Series Scroll Compressor for R22

■ B5 (50Hz 220-240V)

| 相 Phase | 额定功率 Out Put HP | 排气量 Displacement cm ³ /rev | 压缩机型号 Compressor Model | 压缩机代号 Compressor Code | 启动 方式 Starting Method | 50Hz | | | | 外观图代号 Outline Graph Code |
|------------|-----------------------|---|------------------------------|-----------------------------|--------------------------------|--------------|--------|------|--------|--------------------------------|
| | | | | | | 制冷量 Capacity | | COP | | |
| | | | | | | kW | kBTU/h | W/W | BTU/Wh | |
| 1 | 3.1 | 51.8 | C-SBR110H15A | - | PSC | 9.10 | 31.1 | 2.94 | 10.0 | A |
| | 3.5 | 55.7 | C-SBR120H15A | - | PSC | 9.70 | 33.1 | 2.98 | 10.2 | A |
| | | | C-SBR120H15P | - | PSC | 9.70 | 33.1 | 2.98 | 10.2 | A |
| | 3.6 | 60.4 | C-SBX135H15A | - | CSR | 11.0 | 37.6 | 3.33 | 11.4 | A |
| | 4 | 66.8 | C-SBX145H15A | - | CSR | 12.0 | 41.0 | 3.33 | 11.3 | A |
| | | | C-SBR145H15A | - | PSC | 11.7 | 39.9 | 3.12 | 10.7 | A |
| | | | C-SBR145H15P | - | PSC | 11.8 | 40.3 | 3.19 | 10.9 | A |
| | | | C-SBR165H15A | - | PSC | 13.7 | 46.8 | 3.08 | 10.5 | A |
| | 4.6 | 77.4 | C-SBR165H15P | - | CSR | 13.7 | 46.8 | 3.08 | 10.5 | A |
| | | | C-SBR180H15A | - | PSC | 14.7 | 50.2 | 3.16 | 10.8 | A |
| 5 | 83.2 | C-SBR200H15H | - | PSC | 16.4 | 56.0 | 3.12 | 10.7 | J | |
| 3 | 4 | 66.8 | C-SB303H5A | 809 840 85 | - | 11.7 | 39.9 | 3.16 | 10.8 | A |
| | 5 | 83.2 | C-SB373H5A | 809 850 85 | - | 14.7 | 50.2 | 3.16 | 10.8 | A |
| | 6 | 100.0 | C-SB453H5A | 809 860 85 | - | 17.8 | 60.8 | 3.24 | 11.1 | A |

注：“T3”代表应用于T3工况

■ B6 (60Hz 208-230V)

| 相 Phase | 额定功率 Out Put HP | 排气量 Displacement cm ³ /rev | 压缩机型号 Compressor Model | 压缩机代号 Compressor Code | 启动 方式 Starting Method | 60Hz | | | | 外观图代号 Outline Graph Code |
|------------|-----------------------|---|------------------------------|-----------------------------|--------------------------------|--------------|--------|------|--------|--------------------------------|
| | | | | | | 制冷量 Capacity | | COP | | |
| | | | | | | kW | kBTU/h | W/W | BTU/Wh | |
| 1 | 3.5 | 55.7 | C-SBR120H16A | - | PSC | 12.1 | 41.3 | 3.23 | 11.0 | A |
| | | | C-SBR120H16P | - | CSR | 11.9 | 40.6 | 3.09 | 10.5 | A |
| | 4 | 66.8 | C-SBR145H16A | - | PSC | 14.5 | 49.5 | 3.26 | 11.1 | A |
| | | | C-SBR145H16P | - | CSR | 14.4 | 49.2 | 3.20 | 10.9 | A |
| | 4.6 | 77.4 | C-SBR165H16A | - | PSC | 16.8 | 57.4 | 3.20 | 10.9 | A |
| | | | C-SBR165H16P | - | CSR | 16.8 | 57.4 | 3.20 | 10.9 | A |
| 5 | 83.2 | C-SBR180H16A | - | PSC | 18.0 | 61.5 | 3.13 | 10.7 | A | |
| 3 | 3.1 | 51.8 | C-SB263H6C | 809 832 86 | - | 11.1 | 37.9 | 3.13 | 10.7 | A |
| | | | C-SB263H6B | 809 831 86 | - | 11.9 | 40.6 | 3.22 | 11.0 | A |
| | 4 | 66.8 | C-SB303H6A | 809 840 86 | - | 14.4 | 49.2 | 3.27 | 11.2 | A |
| | | | C-SB303H6B | 809 841 86 | - | 14.4 | 49.2 | 3.27 | 11.2 | A |
| | | | C-SB303H6G | 809 846 86 | - | 14.4 | 49.2 | 3.27 | 11.2 | At |
| | 4.6 | 77.4 | C-SB353H6B | 809 843 86 | - | 16.8 | 57.4 | 3.29 | 11.2 | A |
| | | | C-SB353H6C | 809 844 86 | - | 16.8 | 57.4 | 3.29 | 11.2 | A |
| | 5 | 83.2 | C-SB373H6A | 809 850 86 | - | 18.1 | 61.8 | 3.32 | 11.3 | A |
| | | | C-SB373H6B | 809 851 86 | - | 18.1 | 61.8 | 3.32 | 11.3 | A |
| | | | C-SB373H6G | 809 856 86 | - | 18.1 | 61.8 | 3.32 | 11.3 | At |
| | 6 | 100.0 | C-SB453H6A | 809 860 86 | - | 21.3 | 72.7 | 3.25 | 11.1 | A |
| | | | C-SB453H6B | 809 861 86 | - | 21.3 | 72.7 | 3.25 | 11.1 | A |
| C-SB453H6G | | | 809 866 86 | - | 21.3 | 72.7 | 3.25 | 11.1 | At | |
| 7 | 110.2 | C-SBR235H36A | - | - | 23.3 | 79.6 | 3.28 | 11.2 | A | |

注：“T3”代表应用于T3工况

测试工况：冷凝温度54.4℃，蒸发温度7.2℃，过冷度8.3K，过热度11.1K
Rating Condition: Condensing Temperature 54.4℃, Evaporating Temperature 7.2℃, Sub Cooling 8.3K, Superheat 11.1K

■ B系列涡旋压缩机-R22 C-SB Series Scroll Compressor for R22

■ B9 (60Hz 380V)

| 相 Phase | 额定功率 Out Put HP | 排气量 Displacement cm ³ /rev | 压缩机型号 Compressor Model | 压缩机代号 Compressor Code | 启动 方式 Starting Method | 60Hz | | | | 外观图代号 Outline Graph Code |
|------------|-----------------------|---|------------------------------|-----------------------------|--------------------------------|--------------|--------|------|--------|--------------------------------|
| | | | | | | 制冷量 Capacity | | COP | | |
| | | | | | | kW | kBTU/h | W/W | BTU/Wh | |
| 3 | 3.1 | 51.8 | C-SB263H9B | 809 831 89 | - | 10.9 | 37.2 | 3.03 | 10.3 | B |
| | | | C-SB263H9C | 809 832 89 | - | 10.9 | 37.2 | 3.03 | 10.3 | A |
| | 3.5 | 55.7 | C-SB263H9A | 809 830 89 | - | 11.8 | 40.3 | 2.98 | 10.2 | A |
| | 4 | 66.8 | C-SB303H9A | 809 840 89 | - | 14.2 | 48.5 | 3.23 | 11.0 | A |
| | | | C-SB303H9G | 809 846 89 | - | 14.2 | 48.5 | 3.23 | 11.0 | At |
| | 4.6 | 77.4 | C-SB353H9A | 809 842 89 | - | 16.6 | 56.7 | 3.25 | 11.1 | A |
| | | | C-SB373H9A | 809 850 89 | - | 17.8 | 60.8 | 3.24 | 11.1 | A |
| | 5 | 83.2 | C-SB373H9G | 809 856 89 | - | 17.8 | 60.8 | 3.24 | 11.1 | At |
| | | | C-SB453H9A | 809 860 89 | - | 21.2 | 72.4 | 3.24 | 11.1 | A |
| | 6 | 100.0 | C-SB453H9G | 809 866 89 | - | 21.2 | 72.4 | 3.24 | 11.1 | At |
| | | | C-SBR235H39A | - | - | 23.4 | 79.9 | 3.30 | 11.3 | A |
| | 7 | 110.2 | C-SBR235H39B | - | - | 23.4 | 79.9 | 3.30 | 11.3 | At |

测试工况：冷凝温度54.4℃，蒸发温度7.2℃，过冷度8.3K，过热度11.1K
Rating Condition: Condensing Temperature 54.4℃, Evaporating Temperature 7.2℃, Sub Cooling 8.3K, Superheat 11.1K

■外观图 Outline Graph

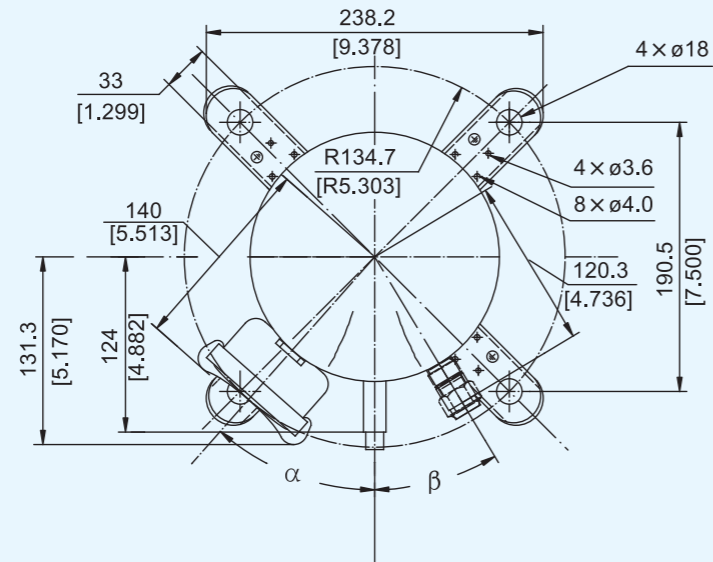
C-SB 系列 Series

B 系列单机外观图
B Series-Single

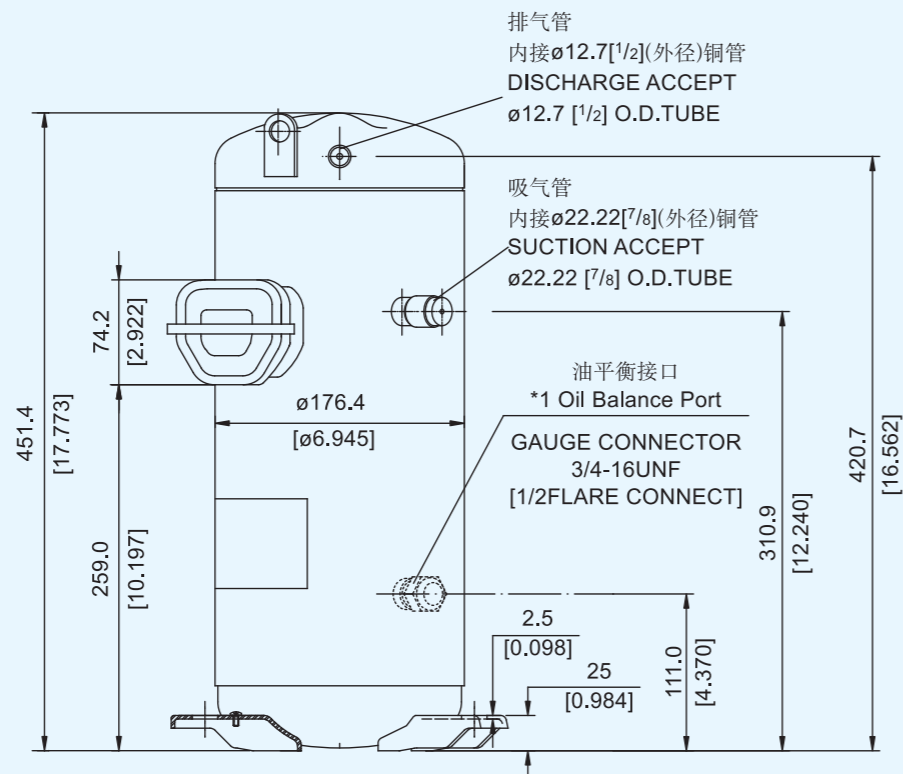
| 代号 CODE | α | β |
|------------|----------|---------|
| A | 41.5° | 31.0° |
| B | 27.5° | 45.0° |

B 系列并联外观图
B Series-Tandem

| 代号 CODE | α | β |
|------------|----------|---------|
| At | 41.5° | 31.0° |



*1 本并联机型附带并联接口。
The connection port of oil balance tube is attached to tandem model.



■外观图 Outline Graph

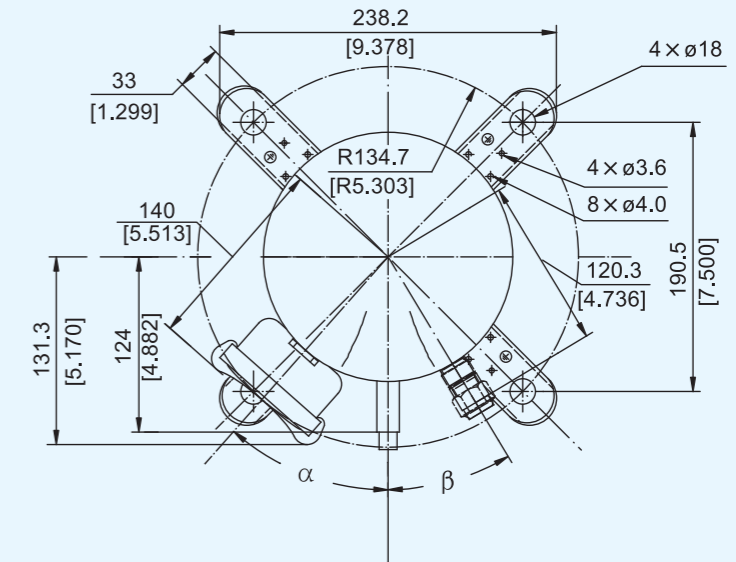
C-SB 系列 Series

B 系列单机外观图
B Series-Single

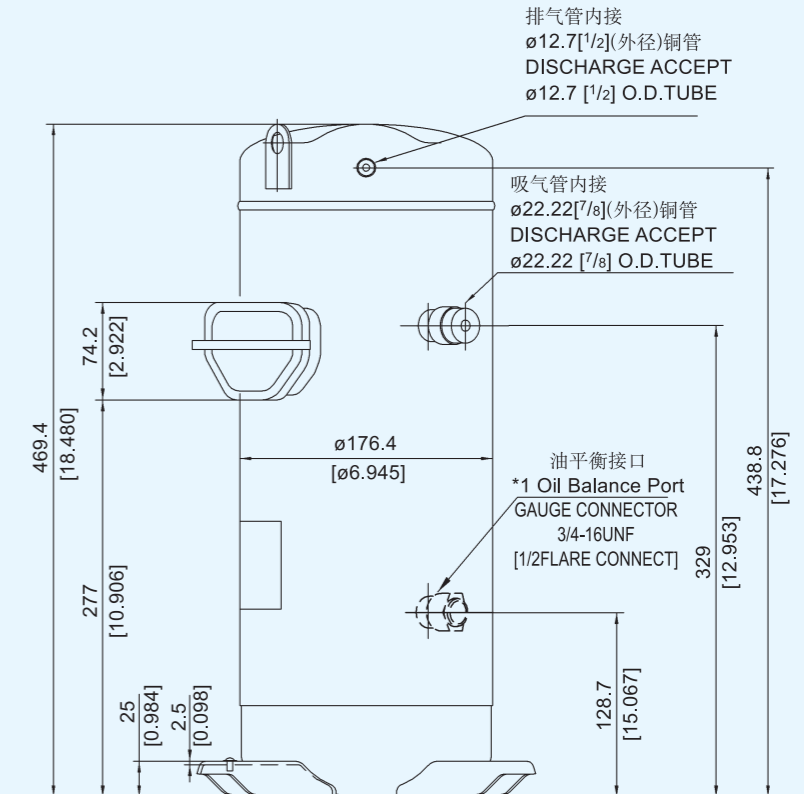
| 代号 CODE | α | β |
|------------|----------|---------|
| J | 41.5° | 31.0° |

B 系列并联外观图
B Series-Tandem

| 代号 CODE | α | β |
|------------|----------|---------|
| Jt | 41.5° | 31.0° |



*1 本并联机型附带并联接口。
The connection port of oil balance tube is attached to tandem model.



■ C系列涡旋压缩机 C-SC Series

特点

高可靠性

主副轴承采用高性能滚动轴承

直接断电内部保护器，可靠保护电机

吸气口内装有滤网，更可靠保护压缩机

Features:

High reliability

High-performance rolling bearing is applied in the main frame and the bearing plate.

Direct power breakdown for motor protection.

The using of strainer in the suction inlet ensures the safety of compressor.

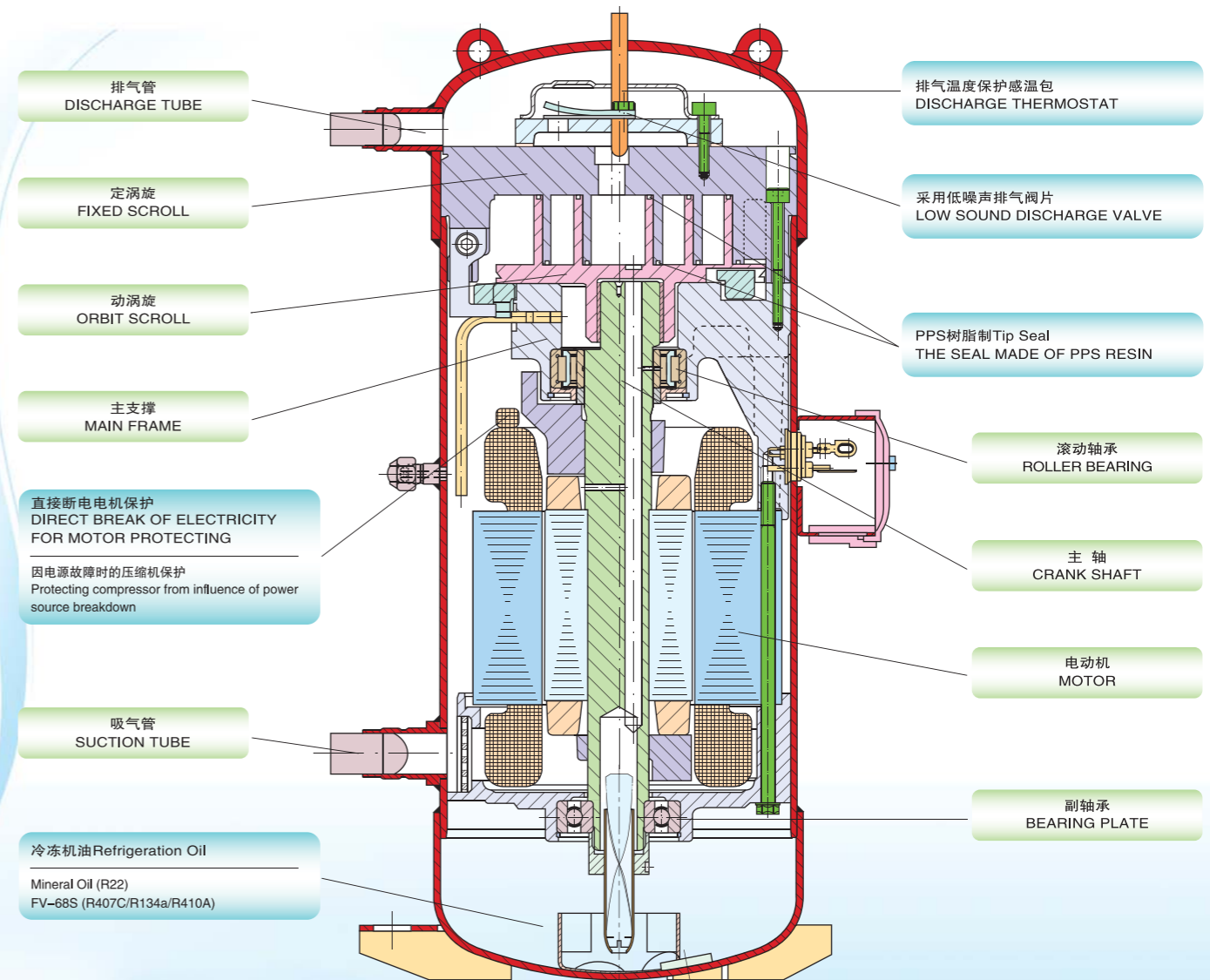


产品型谱 Product Line-up

| 制冷剂 Refrigerant | 电制 Power Supply | 电源 Phase | 额定功率Output(HP) | | | | | | | | | | |
|--------------------|---------------------------------|-------------|----------------|---|---|----|----|------|------|----|----|----|---|
| | | | 7.7 | 8 | 9 | 10 | 11 | 11.4 | 11.6 | 12 | 13 | 15 | |
| R410A | 50Hz 380-415V /60Hz 440-460V | 3 Phase | | ★ | | ★ | ★ | | | | ★ | ★ | ★ |
| | 60Hz 208-230V | 3 Phase | | ★ | | ★ | ★ | | | | ★ | ★ | ★ |
| | 60Hz 380V | 3 Phase | | ★ | | ★ | ★ | | | | ★ | ★ | ★ |
| R407C | 50Hz 380-415V /60Hz 440-460V | 3 Phase | ★ | ★ | ★ | ★ | | | | | ★ | | |
| | 50Hz 220-240V | 3 Phase | ★ | ★ | | ★ | | | | | ★ | | |
| | 60Hz 230V | 3 Phase | | ★ | | ★ | | | | | | | |
| | 60Hz 380V | 3 Phase | | ★ | | ★ | | | | | ★ | | |
| R22 | 50Hz 380-415V /60Hz 440-460V | 3 Phase | ★ | ★ | ★ | ★ | | | ★ | ★ | ★ | | |
| | 50Hz 220-240V | 3 Phase | | ★ | | ★ | | | | | ★ | | |
| | 60Hz 208-230V | 3 Phase | ★ | ★ | ★ | ★ | | | | | ★ | | |
| | 60Hz 380V | 3 Phase | | ★ | | ★ | | | | | ★ | | |

注：如使用其它制冷剂或有其他应用，请与我公司联系确认。
For more information about other refrigerants and application, please contact with us.

■ C系列涡旋压缩机内部结构图 C-SC Series Components



使用工质 Refrigerant R410A/R407C/R22/134a/R32

*如需采用其他制冷剂，请与我公司联系确认。
For more information about other refrigerants products, please contact with us.

■ C系列涡旋压缩机-R22 C-SC Series Scroll Compressor for R22

■ B8 (50Hz 380-415V / 60Hz 440-460V)

| 相 Phase | 额定功率 Out Put HP | 排气量 Displacement cm ³ /rev | 压缩机型号 Compressor Model | 压缩机代号 Compressor Code | 启动 方式 Starting Method | 50Hz | | | | 60Hz | | | | 外观图代号 Outline Graph Code |
|------------|-----------------------|---|------------------------------|-----------------------------|--------------------------------|--------------|--------|------|--------|--------------|--------|------|--------|--------------------------------|
| | | | | | | 制冷量 Capacity | | COP | | 制冷量 Capacity | | COP | | |
| | | | | | | kW | kBTU/h | W/W | BTU/Wh | kW | kBTU/h | W/W | BTU/Wh | |
| 3 | 7.7 | 131.9 | C-SC583H8H | 809 284 88 | - | 23.6 | 80.6 | 3.30 | 11.3 | 28.5 | 97.3 | 3.26 | 11.1 | D |
| | | | C-SC583H8K | 809 286 88 | - | 23.6 | 80.6 | 3.30 | 11.3 | 28.5 | 97.3 | 3.26 | 11.1 | Dt |
| | 8 | 137.0 | C-SC603H8H | 809 281 88 | - | 24.5 | 83.6 | 3.31 | 11.3 | 29.6 | 101.1 | 3.29 | 11.2 | D |
| | | | C-SC603H8K | 809 283 88 | - | 24.5 | 83.6 | 3.31 | 11.3 | 29.6 | 101.1 | 3.29 | 11.2 | Dt |
| | 9 | 148.8 | C-SC673H8H | 809 291 88 | - | 26.5 | 90.5 | 3.29 | 11.2 | 32.0 | 109.3 | 3.27 | 11.2 | D |
| | | | C-SC673H8K | 809 293 88 | - | 26.5 | 90.5 | 3.29 | 11.2 | 32.0 | 109.3 | 3.27 | 11.2 | Dt |
| | 10 | 171.2 | C-SC753H8H | 809 201 88 | - | 30.6 | 104.5 | 3.38 | 11.5 | 36.9 | 126.0 | 3.32 | 11.3 | E |
| | | | C-SC753H8K | 809 203 88 | - | 30.6 | 104.5 | 3.38 | 11.5 | 36.9 | 126.0 | 3.32 | 11.3 | Et |
| | | | C-SC753H8T | 809 205 88 | - | 30.6 | 104.5 | 3.38 | 11.5 | 36.9 | 126.0 | 3.32 | 11.3 | Ht |
| | 11.4 | 194.9 | C-SCX435H38B | - | - | 36.1 | 123.2 | 3.47 | 11.8 | 42.1 | 143.8 | 3.45 | 11.8 | M |
| | 11.6 | 199.1 | C-SC863H8H | 809 224 88 | - | 35.2 | 120.2 | 3.32 | 11.3 | - | - | - | - | E |
| | | | C-SC903H8H | 809 221 88 | - | 36.1 | 123.3 | 3.31 | 11.3 | - | - | - | - | E |
| C-SC903H8K | | | 809 223 88 | - | 36.1 | 123.3 | 3.31 | 11.3 | - | - | - | - | Et | |
| 12 | 205.4 | C-SC903H8T | 809 225 88 | - | 36.1 | 123.3 | 3.31 | 11.3 | - | - | - | - | Ht | |

■ B5 (50Hz 220-240V)

| 相 Phase | 额定功率 Out Put HP | 排气量 Displacement cm ³ /rev | 压缩机型号 Compressor Model | 压缩机代号 Compressor Code | 启动 方式 Starting Method | 50Hz | | | | 外观图代号 Outline Graph Code |
|------------|-----------------------|---|------------------------------|-----------------------------|--------------------------------|--------------|--------|------|--------|--------------------------------|
| | | | | | | 制冷量 Capacity | | COP | | |
| | | | | | | kW | kBTU/h | W/W | BTU/Wh | |
| 3 | 8 | 137.0 | C-SC603H5H | 809 281 85 | - | 24.2 | 82.6 | 3.29 | 11.2 | D |
| | 10 | 171.2 | C-SC753H5H | 809 201 85 | - | 30.6 | 104.5 | 3.36 | 11.5 | E |
| | 12 | 205.4 | C-SC903H5H | 809 221 85 | - | 36.0 | 122.9 | 3.30 | 11.3 | E |

■ B6 (60Hz 208-230V)

| 相 Phase | 额定功率 Out Put HP | 排气量 Displacement cm ³ /rev | 压缩机型号 Compressor Model | 压缩机代号 Compressor Code | 启动 方式 Starting Method | 60Hz | | | | 外观图代号 Outline Graph Code |
|------------|-----------------------|---|------------------------------|-----------------------------|--------------------------------|--------------|--------|------|--------|--------------------------------|
| | | | | | | 制冷量 Capacity | | COP | | |
| | | | | | | kW | kBTU/h | W/W | BTU/Wh | |
| 3 | 7.7 | 131.9 | C-SC583H6H | 809 284 86 | - | 27.9 | 95.3 | 3.19 | 10.9 | D |
| | | | C-SC603H6H | 809 281 86 | - | 29.6 | 101.1 | 3.31 | 11.3 | D |
| | 8 | 137.0 | C-SC603H6K | 809 283 86 | - | 29.6 | 101.1 | 3.31 | 11.3 | Dt |
| | | | C-SC673H6H | 809 291 86 | - | 32.3 | 110.3 | 3.38 | 11.5 | E |
| | 10 | 171.2 | C-SC753H6H | 809 201 86 | - | 37.0 | 126.3 | 3.36 | 11.5 | E |
| | | | C-SC753H6K | 809 203 86 | - | 37.0 | 126.3 | 3.36 | 11.5 | Et |
| 12 | 205.4 | C-SC903H6H | 809 221 86 | - | 43.2 | 147.5 | 3.15 | 10.8 | E | |
| | | C-SC903H6K | 809 222 86 | - | 44.1 | 150.5 | 3.22 | 11.0 | Et | |

■ B9 (60Hz 380V)

| 相 Phase | 额定功率 Out Put HP | 排气量 Displacement cm ³ /rev | 压缩机型号 Compressor Model | 压缩机代号 Compressor Code | 启动 方式 Starting Method | 60Hz | | | | 外观图代号 Outline Graph Code |
|------------|-----------------------|---|------------------------------|-----------------------------|--------------------------------|--------------|--------|------|--------|--------------------------------|
| | | | | | | 制冷量 Capacity | | COP | | |
| | | | | | | kW | kBTU/h | W/W | BTU/Wh | |
| 3 | 8 | 137.0 | C-SC603H9H | 809 281 89 | - | 29.6 | 101.1 | 3.29 | 11.2 | D |
| | | | C-SC603H9K | 809 283 89 | - | 29.6 | 101.1 | 3.29 | 11.2 | Dt |
| | 10 | 171.2 | C-SC753H9H | 809 201 89 | - | 37.3 | 127.3 | 3.36 | 11.5 | E |
| | | | C-SC753H9K | 809 203 89 | - | 37.3 | 127.3 | 3.36 | 11.5 | Et |
| | 12 | 205.4 | C-SC903H9H | 809 221 89 | - | 44.4 | 151.6 | 3.31 | 11.3 | E |
| | | | C-SC903H9T | 809 225 89 | - | 44.3 | 151.2 | 3.31 | 11.3 | Ht |

测试工况：冷凝温度54.4℃，蒸发温度7.2℃，过冷度8.3K，过热度11.1K
Rating Condition: Condensing Temperature 54.4℃, Evaporating Temperature 7.2℃, Sub Cooling 8.3K, Superheat 11.1K

■ 外观图 Outline Graph

C-SC 系列 Series

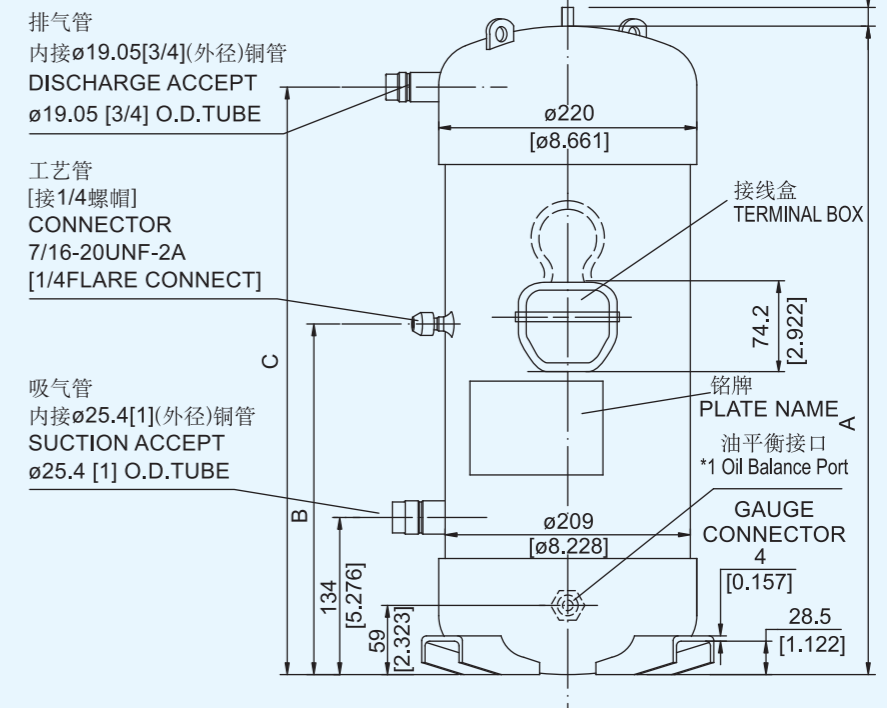
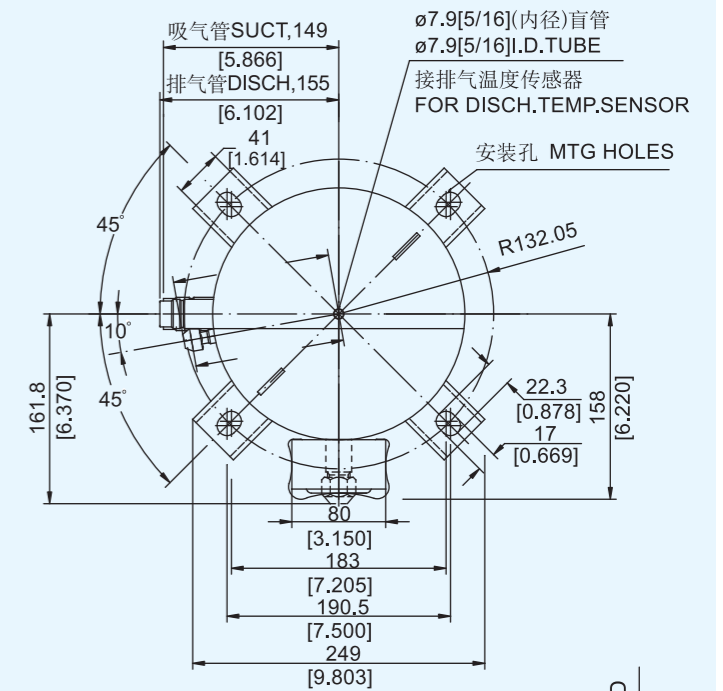
C 系列单机外观图
C Series-Single

| 代号 CODE | A | B | C | D |
|------------|----------------|----------------|----------------|-------------|
| D | 538 [21.18] | 284 [11.18] | 486 [19.13] | 8 [0.31] |
| E | 553 [21.77] | 299 [11.77] | 501 [19.72] | 9 [0.35] |

C 系列并联外观图
C Series-Tandem

| 代号 CODE | A | B | C | D |
|------------|----------------|----------------|----------------|----------------|
| Dt | 538 [21.18] | 284 [11.18] | 486 [19.13] | 8 [0.31] |
| Et | 553 [21.77] | 299 [11.77] | 501 [19.72] | 9 [0.35] |
| Ft | 568 [22.36] | 314 [12.36] | 516 [20.31] | 11.8 [0.46] |

*1 本并联机型附带并联接口。
The connection port of oil balance tube is attached to tandem model.

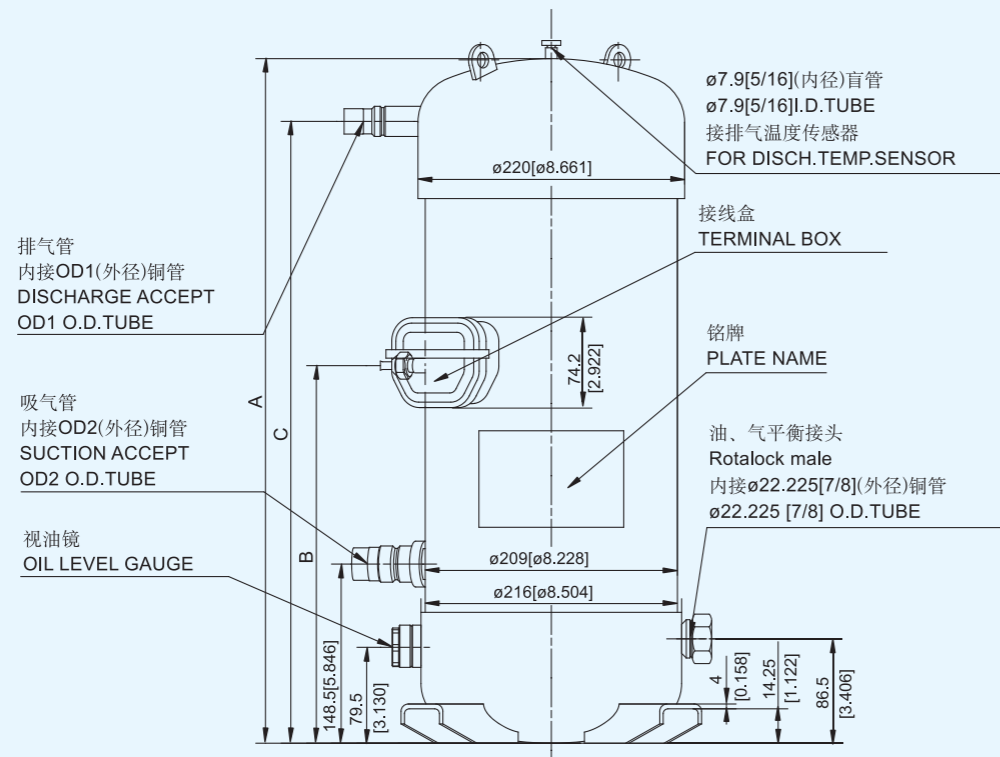
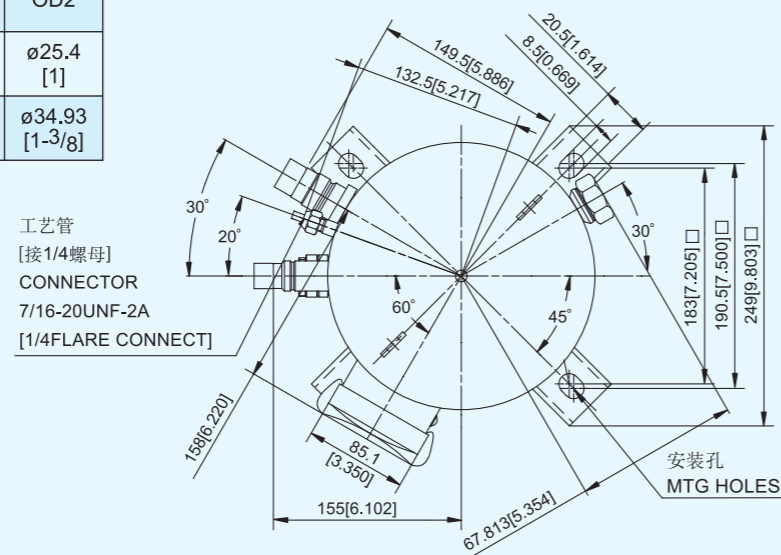


■外观图 Outline Graph

C-SC 系列 Series

C 系列并联外观图
C Series-Tandem

| 代号 CODE | A | B | C | OD1 | OD2 |
|------------|------------------|------------------|------------------|-----------------|-------------------|
| Gt | 552.5 [21.75] | 298.5 [11.75] | 500.5 [19.70] | ø19.05 [3/4] | ø25.4 [1] |
| Ht | 567.5 [22.34] | 313.5 [12.34] | 515.5 [20.30] | ø22.23 [7/8] | ø34.93 [1-3/8] |



■外观图 Outline Graph

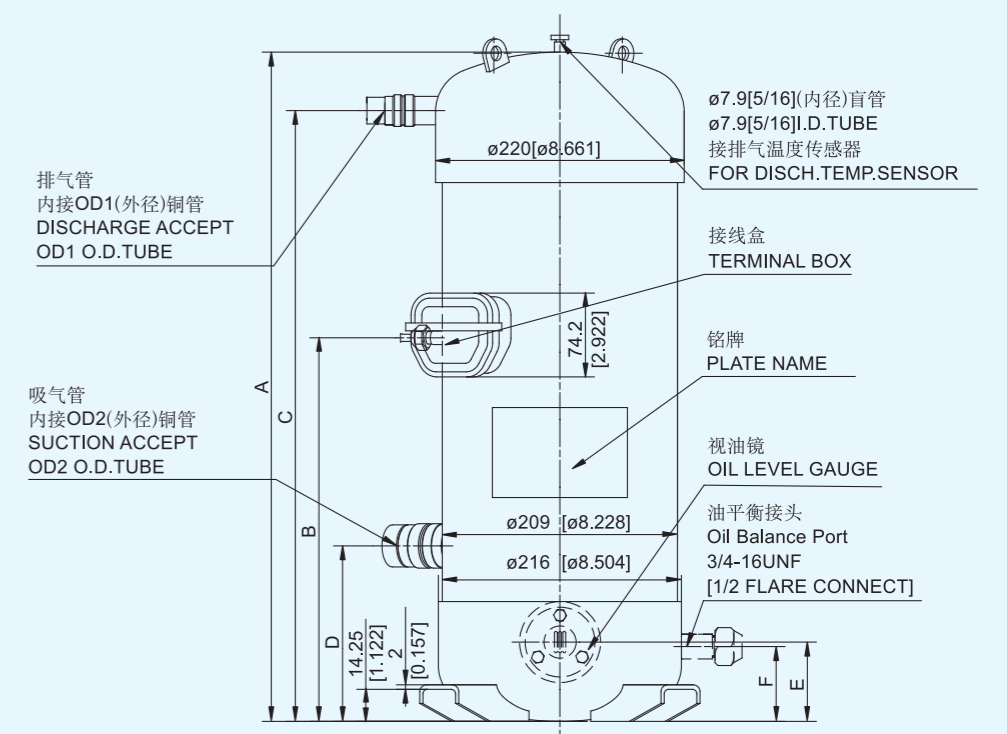
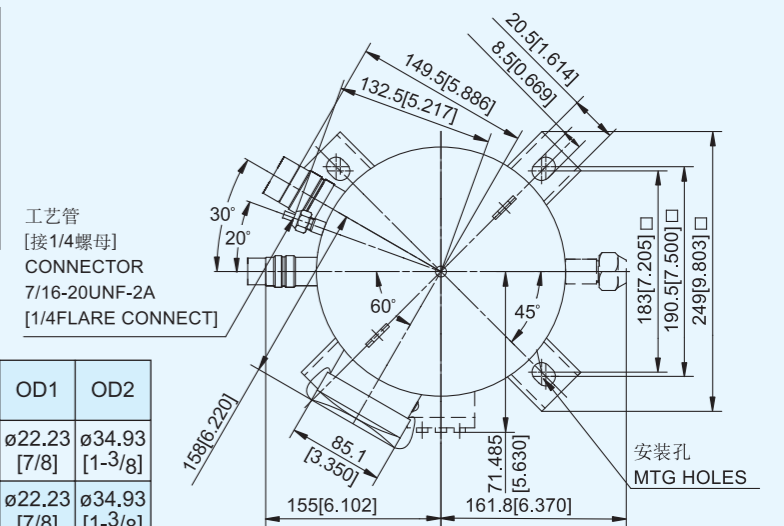
C-SC 系列 Series

C 系列单机外观图
C Series-Single

| 代号 CODE | A | B | C | D | OD1 | OD2 |
|------------|----------------|----------------|----------------|---------------|-----------------|-------------------|
| M | 568 [22.36] | 314 [12.36] | 516 [20.31] | 134 [5.28] | ø22.23 [7/8] | ø34.93 [1-3/8] |
| N | 553 [21.77] | 299 [11.77] | 501 [19.72] | 134 [5.28] | ø22.23 [7/8] | ø34.93 [1-3/8] |
| P | 553 [21.77] | 299 [11.77] | 501 [19.72] | 134 [5.28] | ø19.05 [3/4] | ø25.4 [1] |

C 系列并联外观图
C Series-Tandem

| 代号 CODE | A | B | C | D | E | F | OD1 | OD2 |
|------------|----------------|----------------|----------------|---------------|----------------|----------------|-----------------|-------------------|
| Lt | 595 [23.43] | 341 [13.43] | 543 [21.38] | 156 [6.14] | 70.5 [2.78] | 66.5 [2.62] | ø22.23 [7/8] | ø34.93 [1-3/8] |
| Mt | 568 [22.36] | 314 [12.36] | 516 [20.31] | 134 [5.28] | — | 59 [2.32] | ø22.23 [7/8] | ø34.93 [1-3/8] |
| Nt | 553 [21.77] | 299 [11.77] | 501 [19.72] | 134 [5.28] | — | 59 [2.32] | ø22.23 [7/8] | ø34.93 [1-3/8] |
| Pt | 553 [21.77] | 299 [11.77] | 501 [19.72] | 134 [5.28] | — | 59 [2.32] | ø19.05 [3/4] | ø25.4 [1] |



■D系列涡旋压缩机 (内部高压型)

C-SD Series (Internal High Pressure Design)

特点

节能高效, 全年能效效率(SEER,APF)出色;

负荷输出可平滑调节, 并且不同转速下能效均较高;

空调并联(多联)和均油设计容易, 机组结构简单;

空调快速冷热运转、高输出功率、机组小型化设计。

Saving energy with high efficiency, Annual Performance factor (APF) on a outstanding status;

Smooth capacity output, Energy efficiency keeps at high level under different rotation speed;

Easily connection and oil balance design on tandem and multi A/C system applications;

Quickly to achieve desired cooling and heating effect with high output capacity and compact units design.



电机样式

*DC无刷电机 集中卷线

*磁铁: 稀土类磁铁

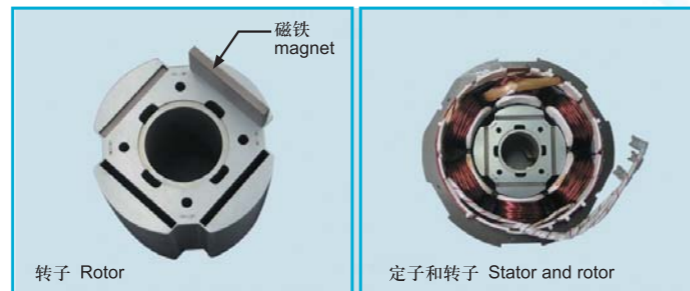
*极数: 4或6极

Motor Type:

*DC brushless motor,
Concentrated winding

*Magnet:Lanthanum magnet

*Pole: 4 or 6



产品型谱 Product Line-up

1.直流变频 DC Inverter

| 制冷剂 Refrigerant | 电源电压 Input Power Source | 排气量Displacement (cm ³ /rev) | | | | | |
|--------------------|----------------------------|--|------|------|------|------|-------|
| | | 42.3 | 58.0 | 66.8 | 80.5 | 85.0 | 100.0 |
| R410A | 380V | ★ | ★ | ★ | ★ | ★ | ★ |
| | 220V | ★ | | | | | |

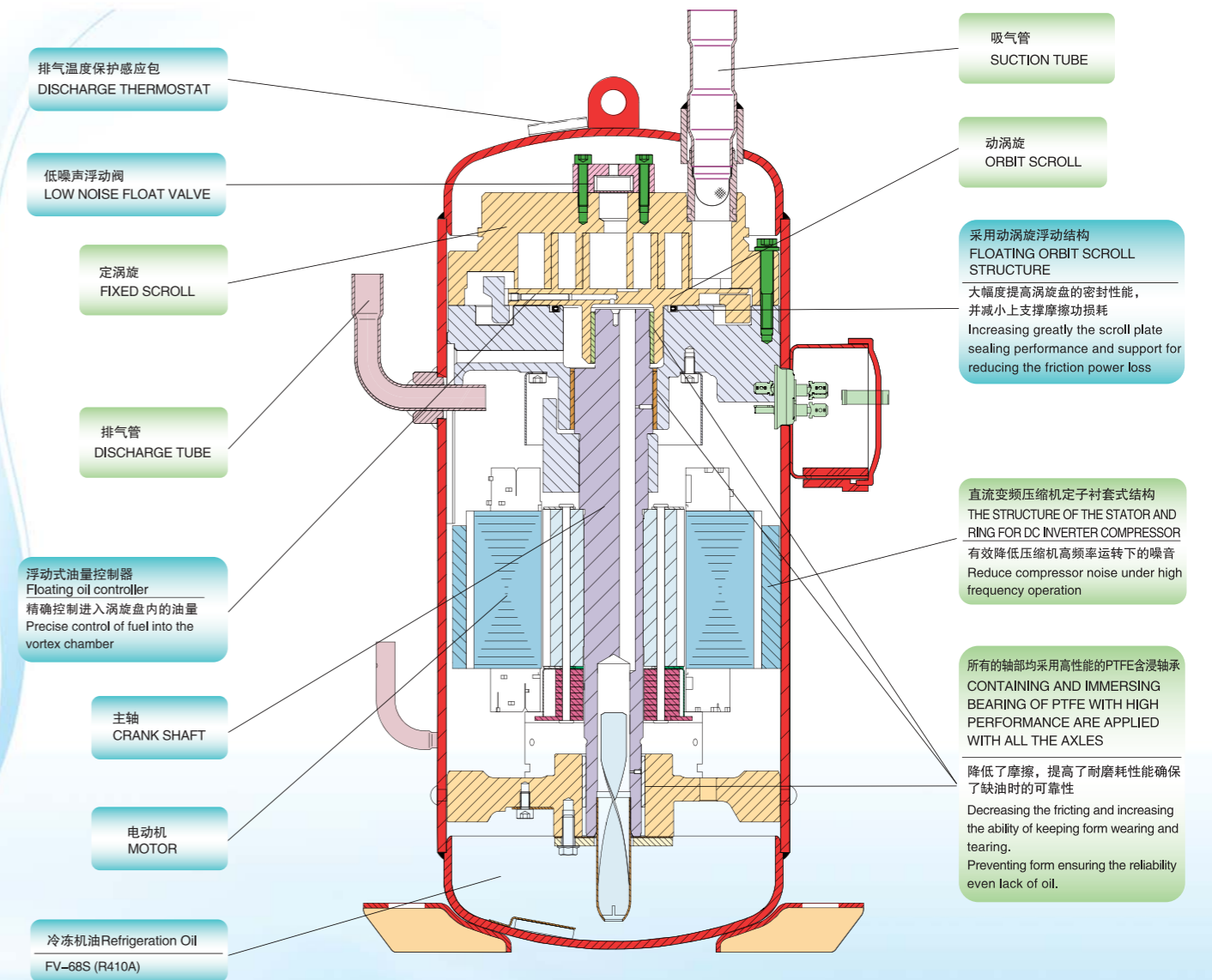
2.定速 Fixed speed

| 制冷剂 Refrigerant | 电制 Power Supply | 电源 Phase | 额定功率Output(HP) | | |
|--------------------|--------------------|-------------|----------------|---|---|
| | | | 5 | 6 | 7 |
| R410A | 50Hz 380-415V | 3 Phase | ★ | ★ | ★ |
| | 60Hz 230V | 3 Phase | ★ | ★ | ★ |
| | 60Hz 380V | 3 Phase | ★ | ★ | ★ |

注: 如使用其它制冷剂或有其他应用, 请与我公司联系确认。
For more information about other refrigerants and application, please contact with us.

■D系列涡旋压缩机内部结构图

C-SD Series Components



使用工质 Refrigerant R410A

*如需采用其他制冷剂, 请与我公司联系确认。
For more information about other refrigerants products, please contact with us.

■D系列涡旋压缩机-R410A C-SD Series Scroll Compressor for R410A

■DC Inverter(380V)

| 压缩机型号 Compressor Model | 排气量 Displacement cm ³ /rev | 转速范围 Revolution Range rps | 60 rps | | | | 外观图代号 Outline Graph Code |
|------------------------------|---|---------------------------------|--------------|--------|------|--------|--------------------------------|
| | | | 制冷量 Capacity | | COP | | |
| | | | kW | kBTU/h | W/W | BTU/Wh | |
| C-SDP205H02B | 42.3 | 30-90 | 13.6 | 46.4 | 3.20 | 10.9 | St |
| C-SDP067H02A | 66.8 | 15-120 | 22.3 | 76.1 | 3.30 | 11.3 | Wt |
| C-SDVN543H0A | 80.5 | 15-120 | 26.7 | 91.2 | 3.30 | 11.3 | Wt |
| 5CD058ZA02 | 58.0 | 15-120 | 19.3 | 65.9 | 3.30 | 11.3 | Xt |
| 5CD067ZA02 | 66.8 | 15-120 | 22.3 | 76.1 | 3.30 | 11.3 | Xt |
| 5CD081ZA02 | 80.5 | 15-120 | 26.7 | 91.2 | 3.30 | 11.3 | Xt |
| 5CD085ZA02 | 85.0 | 15-120 | 28.2 | 96.3 | 3.30 | 11.3 | — |
| 5CD100ZA02 | 100.0 | 15-120 | 33.2 | 113.4 | 3.30 | 11.3 | — |

■DC Inverter(220V)

| 压缩机型号 Compressor Model | 排气量 Displacement cm ³ /rev | 转速范围 Revolution Range rps | 60 rps | | | | 外观图代号 Outline Graph Code |
|------------------------------|---|---------------------------------|--------------|--------|------|--------|--------------------------------|
| | | | 制冷量 Capacity | | COP | | |
| | | | kW | kBTU/h | W/W | BTU/Wh | |
| C-SDP205H03B | 42.3 | 30-90 | 13.6 | 46.4 | 3.20 | 10.9 | St |

测试工况：冷凝温度54.4℃，蒸发温度7.2℃，过冷度8.3K，过热度11.1K
Rating Condition: Condensing Temperature54.4℃, Evaporating Temperature7.2℃, Sub Cooling8.3K, Superheat11.1K

■D系列涡旋压缩机-R410A C-SD Series Scroll Compressor for R410A

■B8(50Hz 380-415V)

| 相 Phase | 额定功率 Out Put HP | 排气量 Displacement cm ³ /rev | 压缩机型号 Compressor Model | 压缩机代号 Compressor Code | 60Hz | | | | 外观图代号 Outline Graph Code |
|------------|-----------------------|---|------------------------------|-----------------------------|--------------|--------|------|--------|--------------------------------|
| | | | | | 制冷量 Capacity | | COP | | |
| | | | | | kW | kBTU/h | W/W | BTU/Wh | |
| 3 | 5 | 55.7 | C-SDP180H38B | - | 14.5 | 49.5 | 3.00 | 10.2 | Rt |
| | 6 | 66.8 | C-SDP205H38B | - | 16.9 | 57.7 | 3.00 | 10.2 | Qt |
| | 7 | 74.4 | C-SDP225H38B | - | 18.8 | 64.2 | 2.95 | 10.1 | Qt |

■B6(60Hz 230V)

| 相 Phase | 额定功率 Out Put HP | 排气量 Displacement cm ³ /rev | 压缩机型号 Compressor Model | 压缩机代号 Compressor Code | 60Hz | | | | 外观图代号 Outline Graph Code |
|------------|-----------------------|---|------------------------------|-----------------------------|--------------|--------|------|--------|--------------------------------|
| | | | | | 制冷量 Capacity | | COP | | |
| | | | | | kW | kBTU/h | W/W | BTU/Wh | |
| 3 | 5 | 55.7 | C-SDP180H36B | - | 18.0 | 61.50 | 3.1 | 10.6 | Rt |
| | 6 | 66.8 | C-SDP205H36B | - | 21.2 | 72.4 | 3.1 | 10.6 | Qt |
| | 7 | 74.4 | C-SDP225H36B | - | 23.00 | 78.50 | 3.00 | 10.24 | Qt |

■B9(60Hz 380V)

| 相 Phase | 额定功率 Out Put HP | 排气量 Displacement cm ³ /rev | 压缩机型号 Compressor Model | 压缩机代号 Compressor Code | 60Hz | | | | 外观图代号 Outline Graph Code |
|------------|-----------------------|---|------------------------------|-----------------------------|--------------|--------|------|--------|--------------------------------|
| | | | | | 制冷量 Capacity | | COP | | |
| | | | | | kW | kBTU/h | W/W | BTU/Wh | |
| 3 | 5 | 55.7 | C-SDP180H39B | - | 18.0 | 61.50 | 3.10 | 10.58 | Rt |
| | 6 | 66.8 | C-SDP205H39B | - | 21.2 | 72.4 | 3.1 | 10.6 | Qt |
| | 7 | 74.4 | C-SDP225H39B | - | 23.00 | 78.50 | 3.00 | 10.24 | Qt |

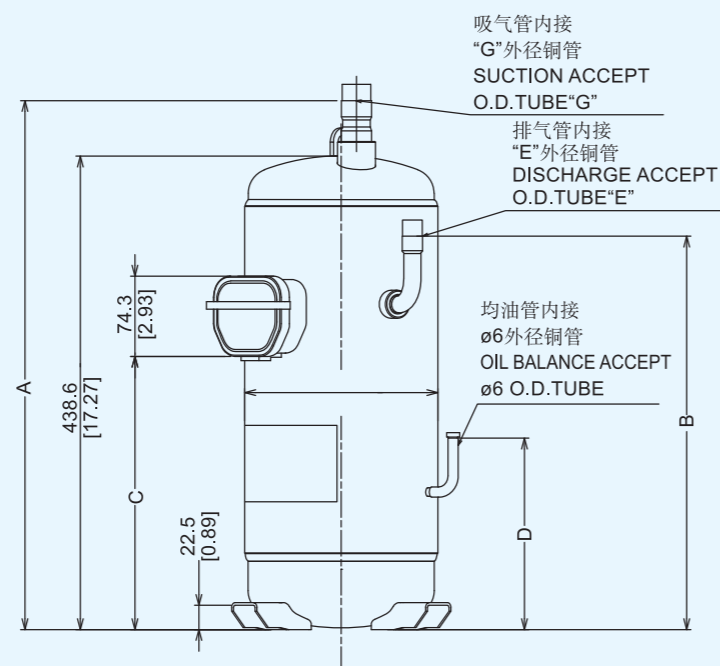
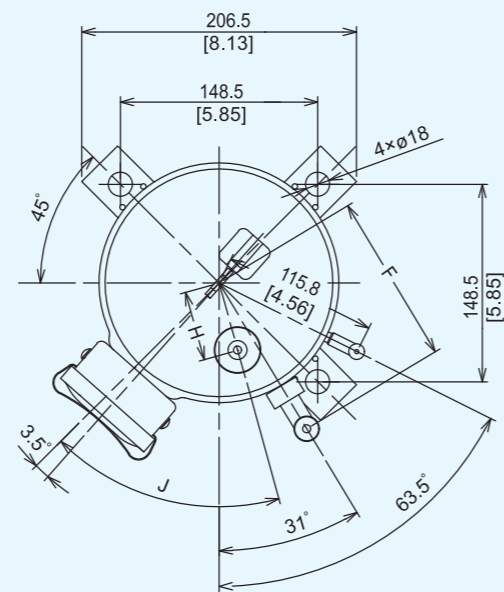
测试工况：冷凝温度54.4℃，蒸发温度7.2℃，过冷度8.3K，过热度11.1K
Rating Condition: Condensing Temperature54.4℃, Evaporating Temperature7.2℃, Sub Cooling8.3K, Superheat11.1K

■外观图 Outline Graph

C-SD 系列 Series

D 系列外观图
D Series

| 代号 CODE | A | B | C | D | E | F | G | H | J |
|------------|------------------|------------------|------------------|-----------------|----------------|-----------------|-----------------|----------------|-------|
| Qt | 531.0 [20.91] | 390.4 [15.37] | 282.4 [11.12] | 158.4 [6.24] | ∅12.7 [1/2] | 125.0 [4.92] | ∅22.22 [7/8] | 50.0 [4.92] | 25.5° |
| Rt | 526.4 [20.72] | 390.4 [15.37] | 282.4 [11.12] | 158.4 [6.24] | ∅12.7 [1/2] | 125.0 [4.92] | ∅22.22 [7/8] | 50.0 [4.92] | 25.5° |
| St | 478.7 [18.85] | 344.7 [13.57] | 237.2 [9.34] | 157.7 [6.21] | ∅12.7 [1/2] | 125.0 [4.92] | ∅22.22 [7/8] | 50.0 [4.92] | 25.5° |
| Wt | 490.0 [19.29] | 364.4 [14.33] | 253.1 [9.96] | 177.4 [6.98] | ∅15.9 [5/8] | 128.0 [5.09] | ∅25.40 [1] | 52.5 [2.07] | 60.5° |

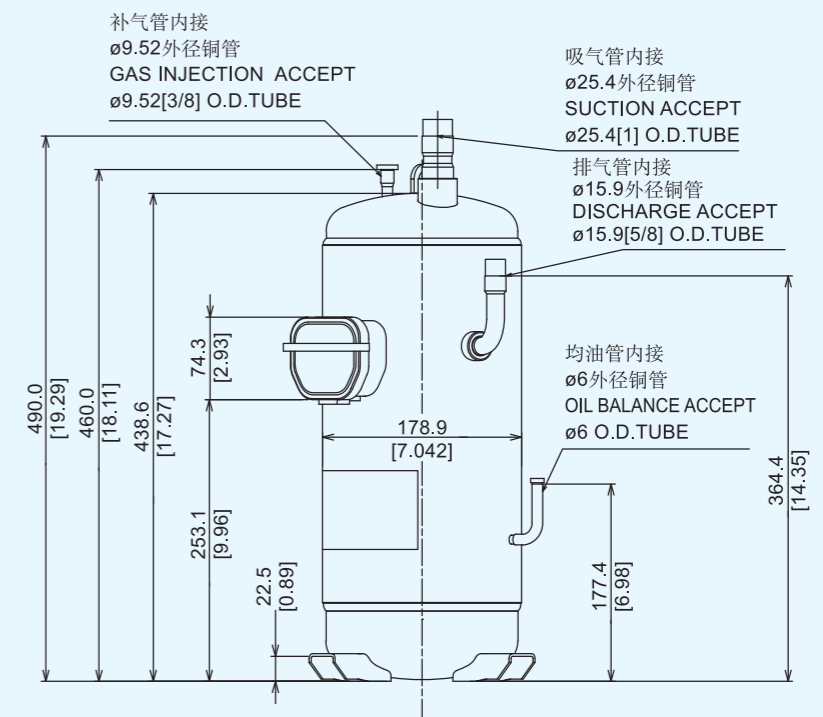
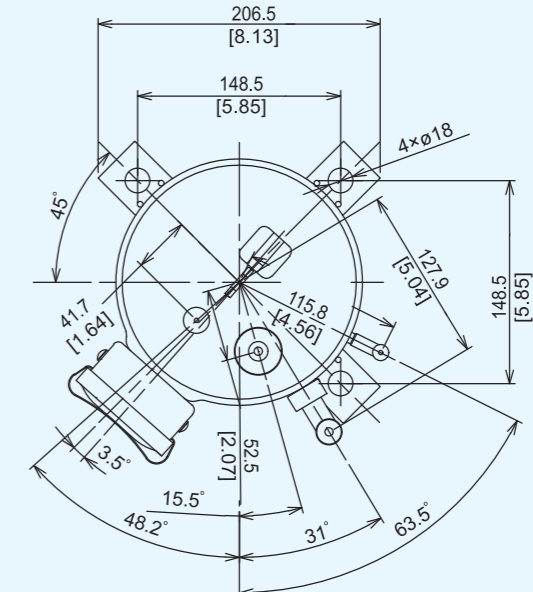


■外观图 Outline Graph

C-SD 系列 Series

D 系列外观图
D Series

| 代号 CODE |
|------------|
| Xt |



■ E系列涡旋压缩机 C-SE Series

特点

轴向柔性，利用定涡旋浮动密封结构，提高能效；同时防止液击及杂质损坏，提高可靠性
径向柔性，利用可动偏心，提高能效
机构复杂，液体及杂质容忍度提高

Features:

Axial compliance design, fixed scroll floating sealing structure, improve the efficiency;
Radial compliance design, improve the efficiency
High tolerance for liquid refrigerant and contaminants, improve the reliability

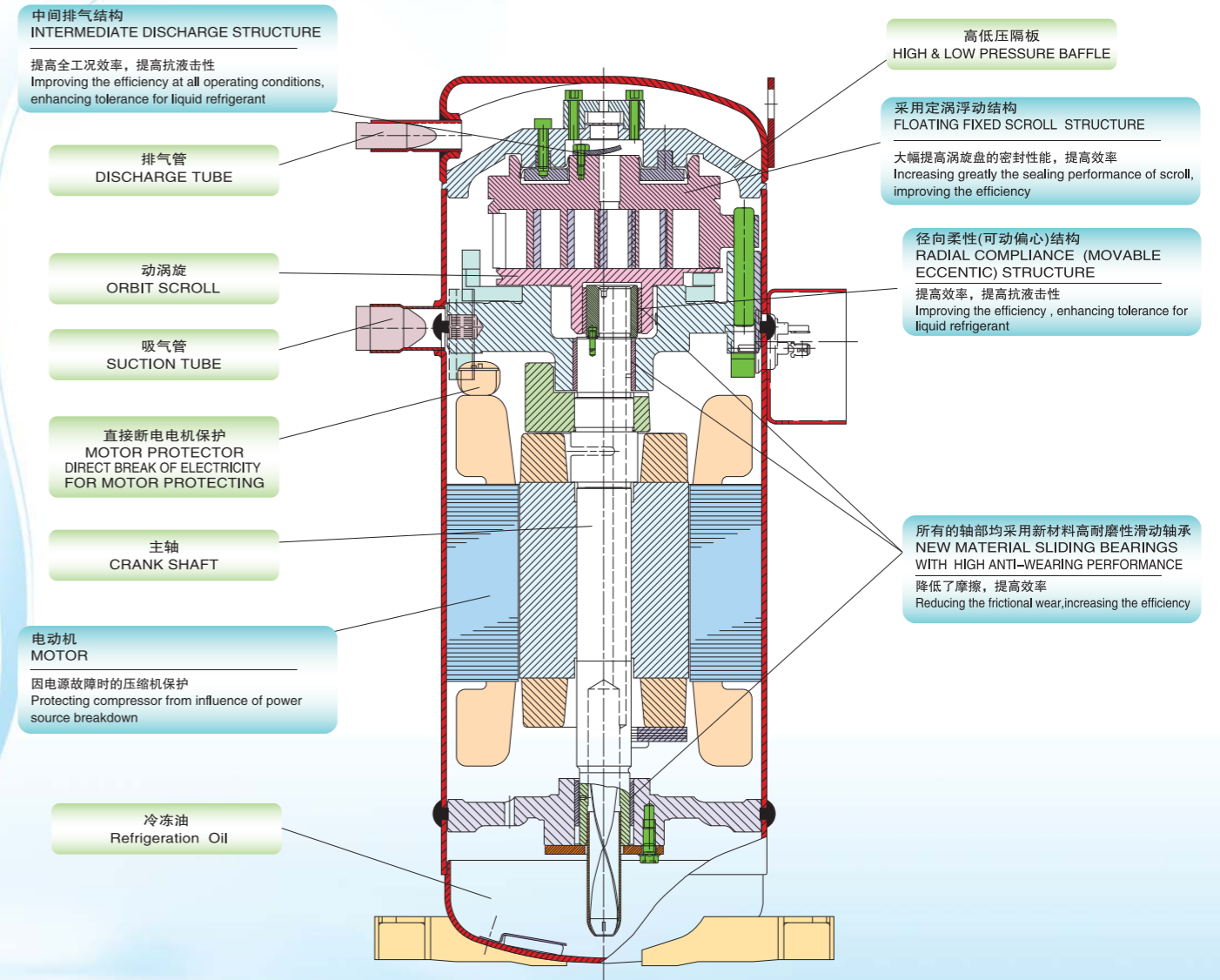


产品型谱 Product Line-up

| 制冷剂 Refrigerant | 电制 Power Supply | 电源 Phase | 额定功率Output(HP) | | | | | | | |
|--------------------|--------------------|-------------|----------------|-----|---|-----|-----|-----|-----|---|
| | | | 3.5 | 3.7 | 4 | 4.3 | 4.5 | 4.8 | 5.3 | 6 |
| R410A | 50Hz 380-415V | 三相3 Phase | ★ | ★ | ★ | ★ | ★ | ★ | ★ | ★ |
| | 60Hz 208-230V | 三相3 Phase | | ★ | ★ | ★ | ★ | ★ | ★ | ★ |
| | 60Hz 380V | 三相3 Phase | | ★ | ★ | ★ | ★ | ★ | ★ | ★ |
| R407C | 50Hz 380-415V | 三相3 Phase | ★ | | ★ | ★ | | | | |
| R22 | 50Hz 380V | 三相3 Phase | | | | ★ | | | | |

注：如使用其它制冷剂或有其他应用，请与我公司联系确认。
For more information about other refrigerants and application, please contact with us.

■ E系列涡旋压缩机内部结构图 C-SE Series Components



使用工质 Refrigerant R410A/R407C/R22/134a/R32

*如需采用其他制冷剂，请与我公司联系确认。
For more information about other refrigerants products, please contact with us.

■E系列涡旋压缩机-R410A C-SE Series Scroll Compressor for R410A

■B8 (50Hz 380-415V)

| 相 Phase | 额定功率 Out Put HP | 排气量 Displacement cm ³ /rev | 压缩机型号 Compressor Model | 压缩机代号 Compressor Code | 启动 方式 Starting Method | 50Hz | | | | 外观图代号 Outline Graph Code |
|------------|-----------------------|---|------------------------------|-----------------------------|--------------------------------|--------------|--------|------|--------|--------------------------------|
| | | | | | | 制冷量 Capacity | | COP | | |
| | | | | | | kW | kBTU/h | W/W | BTU/Wh | |
| 3 | 3.5 | 39.1 | C-SEP120H38C | - | - | 10.00 | 34.1 | 3.00 | 10.2 | V |
| | 3.7 | 42.5 | C-SEP130H38A | - | - | 11.00 | 37.6 | 3.05 | 10.4 | V |
| | | | C-SEP130H38C | - | - | 10.80 | 36.9 | 3.00 | 10.2 | V |
| | 4 | 46.6 | C-SEP140H38A | - | - | 12.10 | 41.3 | 3.05 | 10.4 | V |
| | | | C-SEP140H38C | - | - | 12.10 | 41.3 | 3.00 | 10.2 | V |
| | 4.3 | 48.5 | C-SEP150H38A | - | - | 12.50 | 42.7 | 3.05 | 10.4 | V |
| | | | C-SEP150H38C | - | - | 12.30 | 42.0 | 3.00 | 10.2 | V |
| | 4.5 | 51.1 | C-SEP160H38A | - | - | 13.30 | 45.4 | 3.05 | 10.4 | V |
| | | | C-SEP160H38C | - | - | 13.20 | 45.1 | 3.00 | 10.2 | V |
| | 4.8 | 55.5 | C-SEP170H38A | - | - | 14.40 | 49.2 | 3.05 | 10.4 | V |
| | | | C-SEP170H38C | - | - | 14.50 | 49.5 | 3.00 | 10.2 | V |
| | 5.3 | 58.5 | C-SEP180H38C | - | - | 15.10 | 51.6 | 3.10 | 10.6 | V |
| 6 | 67.0 | C-SEP205H38A | - | - | 17.30 | 59.1 | 3.10 | 10.6 | V | |

注：压缩机型号A结尾代表铜线电机，C结尾代表铜包铝线电机

■B6 (60Hz 208-230V)

| 相 Phase | 额定功率 Out Put HP | 排气量 Displacement cm ³ /rev | 压缩机型号 Compressor Model | 压缩机代号 Compressor Code | 启动 方式 Starting Method | 60Hz | | | | 外观图代号 Outline Graph Code |
|------------|-----------------------|---|------------------------------|-----------------------------|--------------------------------|--------------|--------|------|--------|--------------------------------|
| | | | | | | 制冷量 Capacity | | COP | | |
| | | | | | | kW | kBTU/h | W/W | BTU/Wh | |
| 3 | 3.7 | 42.5 | C-SEP130H36A | - | - | 13.10 | 44.7 | 3.05 | 10.4 | V |
| | 4 | 46.6 | C-SEP140H36A | - | - | 14.30 | 48.8 | 3.05 | 10.4 | V |
| | 4.3 | 48.5 | C-SEP150H36A | - | - | 14.90 | 50.9 | 3.05 | 10.4 | V |
| | 4.5 | 51.1 | C-SEP160H36A | - | - | 15.70 | 53.6 | 3.10 | 10.6 | V |
| | 4.8 | 55.5 | C-SEP170H36A | - | - | 16.80 | 57.4 | 3.10 | 10.6 | V |
| | 5.3 | 58.5 | C-SEP180H36A | 809 451 86 | - | 18.30 | 62.5 | 3.17 | 10.8 | V |
| | 6 | 67.0 | C-SEP205H36A | - | - | 20.60 | 70.3 | 3.10 | 10.6 | V |

■B9 (60Hz 380V)

| 相 Phase | 额定功率 Out Put HP | 排气量 Displacement cm ³ /rev | 压缩机型号 Compressor Model | 压缩机代号 Compressor Code | 启动 方式 Starting Method | 60Hz | | | | 外观图代号 Outline Graph Code |
|------------|-----------------------|---|------------------------------|-----------------------------|--------------------------------|--------------|--------|------|--------|--------------------------------|
| | | | | | | 制冷量 Capacity | | COP | | |
| | | | | | | kW | kBTU/h | W/W | BTU/Wh | |
| 3 | 3.7 | 42.5 | C-SEP130H39A | - | - | 13.20 | 45.1 | 3.05 | 10.4 | V |
| | 4 | 46.6 | C-SEP140H39A | - | - | 14.50 | 49.5 | 3.05 | 10.4 | V |
| | 4.3 | 48.5 | C-SEP150H39A | - | - | 14.90 | 50.9 | 3.05 | 10.4 | V |
| | 4.5 | 51.1 | C-SEP160H39A | - | - | 15.90 | 54.3 | 3.10 | 10.6 | V |
| | 4.8 | 55.5 | C-SEP170H39A | - | - | 17.30 | 59.1 | 3.15 | 10.8 | V |
| | 5.3 | 58.5 | C-SEP180H39A | - | - | 18.40 | 62.8 | 3.20 | 10.9 | V |
| | 6 | 67.0 | C-SEP205H39A | - | - | 21.20 | 72.4 | 3.20 | 10.9 | V |

测试工况：冷凝温度54.4℃，蒸发温度7.2℃，过冷度8.3K，过热度11.1K
Rating Condition: Condensing Temperature54.4℃, Evaporating Temperature7.2℃, Sub Cooling8.3K, Superheat11.1K

■E系列涡旋压缩机-R407C C-SE Series Scroll Compressor for R407C

■B8 (50Hz 380-415V)

| 相 Phase | 额定功率 Out Put HP | 排气量 Displacement cm ³ /rev | 压缩机型号 Compressor Model | 压缩机代号 Compressor Code | 启动 方式 Starting Method | 50Hz | | | | 外观图代号 Outline Graph Code |
|------------|-----------------------|---|------------------------------|-----------------------------|--------------------------------|--------------|--------|------|--------|--------------------------------|
| | | | | | | 制冷量 Capacity | | COP | | |
| | | | | | | kW | kBTU/h | W/W | BTU/Wh | |
| 3 | 3.5 | 55.5 | C-SES120H38A | - | - | 10.30 | 35.2 | 3.10 | 10.6 | V |
| | 4 | 67.0 | C-SES140H38A | - | - | 12.40 | 42.3 | 3.10 | 10.6 | V |
| | 4.3 | 70.6 | C-SES150H38A | - | - | 13.00 | 44.4 | 3.20 | 10.9 | V |

■E系列涡旋压缩机-R22 C-SE Series Scroll Compressor for R22

■B8 (50Hz 380V)

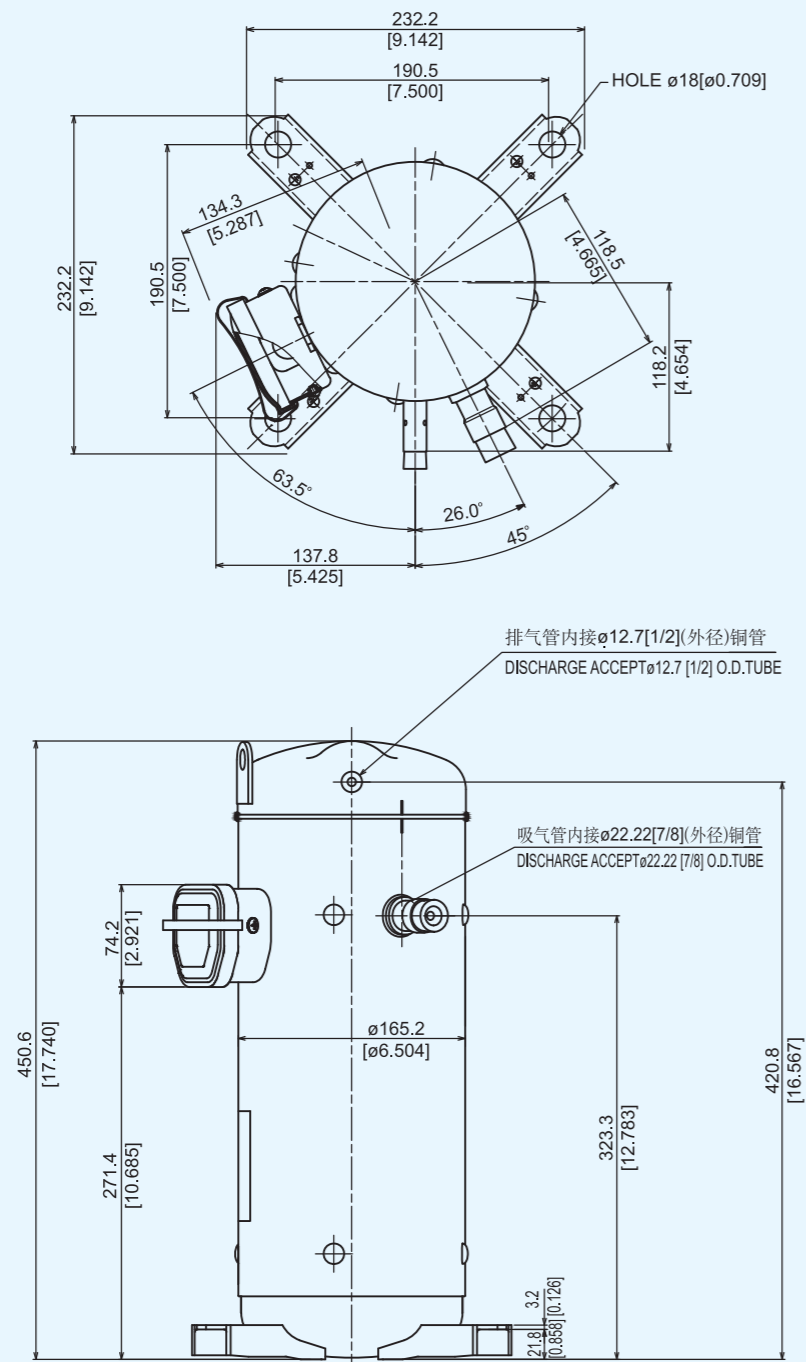
| 相 Phase | 额定功率 Out Put HP | 排气量 Displacement cm ³ /rev | 压缩机型号 Compressor Model | 压缩机代号 Compressor Code | 启动 方式 Starting Method | 50Hz | | | | 外观图代号 Outline Graph Code |
|------------|-----------------------|---|------------------------------|-----------------------------|--------------------------------|--------------|--------|------|--------|--------------------------------|
| | | | | | | 制冷量 Capacity | | COP | | |
| | | | | | | kW | kBTU/h | W/W | BTU/Wh | |
| 3 | 4.3 | 70.6 | C-SE320H8A | 809 441 88 | - | 13.00 | 44.4 | 3.47 | 11.8 | V |

测试工况：冷凝温度54.4℃，蒸发温度7.2℃，过冷度8.3K，过热度11.1K(R407C过热度9K)
Rating Condition: Condensing Temperature54.4℃, Evaporating Temperature7.2℃, Sub Cooling8.3K, Superheat11.1K(9K for R407C)

■外观图 Outline Graph

C-SE 系列 Series

| |
|------------|
| 代号 CODE |
| V |



■户式中央空调的核心

THE HEART OF RESIDENTIAL & LIGHT COMMERCIAL AIR CONDITIONING

并联系列 Tandem Series

能力范围由 7HP ~ 30HP

可靠 & 简单的均油设计

低噪声 & 低振动

紧凑型 & 轻量设计

使用制冷剂: R22/R407C/R410A/R134a

支持各种不同的电源制式

Range from 7HP to 30HP

Reliable & Simple Design of Oil Balance

Low Sound Level & Low Vibration

Compact & Light Weight

Refrigerant R22/R407C/R410A/R134a

Support a wide variety of Power Source

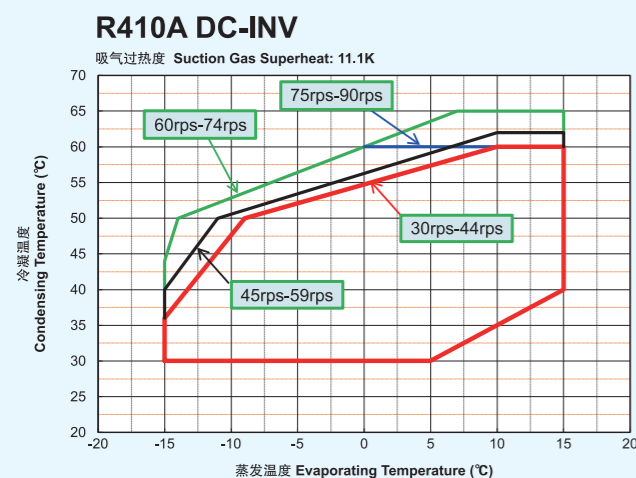
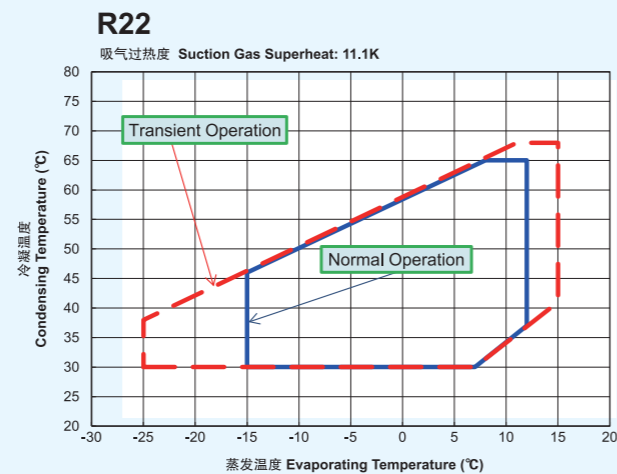
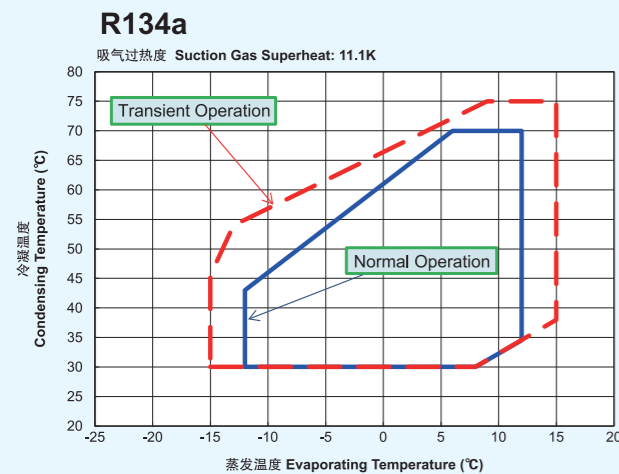
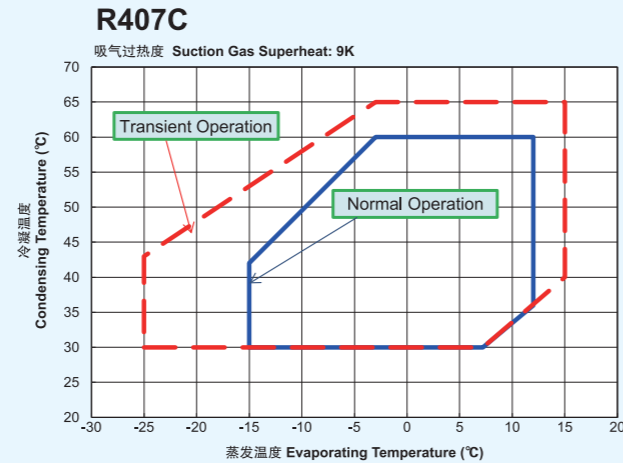
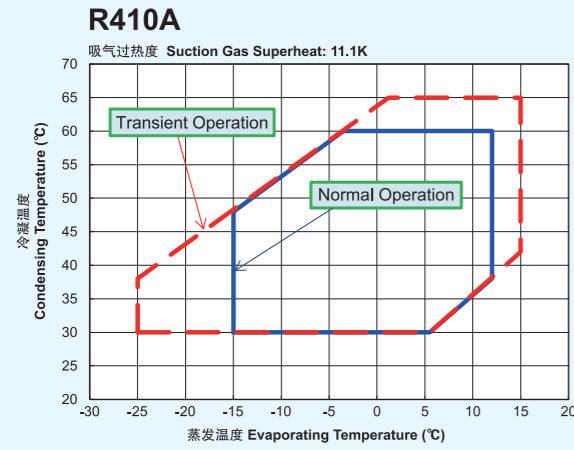
C-SC 系列 Series



C-SB 系列 Series



■ 运转范围 Operating Envelope



注：实际运转范围图，请见产品使用规格书。
tips: Please view compressor specifications for the detailed operating envelope.

■ R410A 机型使用标准·使用极限 APPLICATION STANDARD & LIMIT(R410A)

为正确使用立式涡旋压缩机，对其使用标准、使用极限作如下规定 The following requirements apply to Vertical type Hermetic Scroll Compressors:
使用标准值 Standard:适用于常用条件下(日本 JIS B8616, 与 JIS B8616 相关标准、过载、低温条件下的商品运转条件)的运转。Applicable to ordinary conditions in Japan JIS B8616 or equivalent conditions,such as standard rating conditions, maximum operating conditions, low temperature conditions,etc.使用极限值 Limit 适用于过渡条件下(启动时、除霜时等)的短时间运转。Applicable to transitional brief periods, such as start-up and beginning of defrost mode.

| 序号 No. | 项目 Item | 使用标准值 Standard | 使用极限值 Limit | 备注 Note |
|--------|---|---|---|---|
| 1 | 制冷剂 Refrigerant | R410A | | |
| 2 | 蒸发温度范围 Evaporating Temp. | -15 ~ +12℃/[5 ~ 54°F] 0.38 ~ 1.05MPa(G)/[55 ~ 152psig] | -25 ~ +15℃/[-13 ~ 59°F] 0.23 ~ 1.15MPa(G)/[33 ~ 167psig] | 压力指吸气压力 Compressor Suction Pressure |
| 3 | 冷凝温度范围 Condensing Temp. | +30 ~ +60℃/[86 ~ 140°F] 1.78 ~ 3.75MPa(G)/[258 ~ 544psig] | +65℃/[149°F] 4.18MPa(G)/[606psig] | 压力指排气压力 Compressor Discharge Pressure |
| 4 | 压缩比 Compression Ratio | 2 ~ 6 | 8 | |
| 5 | 电动机绕组温度 Winding Temp. | 115℃/[240°F]以下 Max. | 125℃/[257°F] | |
| 6 | 压缩机外壳底部温度 Shell Bottom Temp. | 上限: 90℃/[194°F]以下 Upper Limit:90℃/[194°F] Max. 下限: 蒸发压力相对应饱和温度+12K/[21°F] 以上 Lower Limit:Evaporating Temp.+12K/[21°F] Min. | | 运转时 When compressor is running |
| | | 下限: 环境温度+11K/[20°F] 以上 Lower Limit:Ambient Temp.+11K/[20°F] Min. | | 停机时 When compressor shuts off |
| 7 | 排气温度 Discharge Gas Temp. | 115℃/[240°F] 以下 Max | C-SB:130℃/[266°F]以下 Max | 距压缩机出口 10cm 以内位置的排气管温度 Within 100mm(4in) of the discharge fitting. |
| | | | C-SC:135℃/[275°F]以下 Max | 压缩机上盖中部的铜管内排气温度保护器的检测温度 Inside of the well pipe on the top of compressor |
| 8 | 吸气温度 Suction Gas Temp. | 吸气过热度在5K/[10°F] 以上 Superheat:5K/[10°F] Min. | 应无由于液体吸入而引起的冲刷 音(不增加电流及振动) No excessive noise. | 距压缩机吸气口 300mm 以内,应同时 满足5,6,7和14项的要求。 It should meet the requirement of item 5,6,7 and 14 within 300mm of the suction fitting. |
| 9 | 运转时供电电压 Running Voltage | 额定电压 ±10% Within ±10% of the rated voltage. | | 运转时压缩机接线柱电压 Voltage at compressor terminals. |
| 10 | 启动时供电电压 Starting voltage | 三相机: 额定电压 85% 以上 Three Phase Models:85% of the rated voltage min. | | 指在启动电流升高, 电压下降时的压缩机接线柱电压 Dropped voltage at compressor terminals. |
| | | 单相机: 额定电压 90% 以上 Single Phase Models:90% of the rated voltage min. | | |
| 11 | 启停周期 On/Off Period | 运转时间: 至少应使油回到指定油位所需的时间 ON Period:Until the oil level returns to the center of the lower bearing. 停止时间: 至少应使高低压达到平衡所需的时间 OFF Period:Until balance of high and low pressure is obtained. | | 1周期: 10 分钟 停止时间: 以3分 钟左右为标准 For at least 7 minutes-ON/3 minutes- OFF is recommendable |
| 12 | 制冷剂注入量 Refrigerant Charge | 油/制冷剂重量比推荐为 0.35 以上Oil/Refrigerant(wt.)≥0.35 | | 油比重: 0.94 Specific gravity of the Oil:0.94 |
| 13 | 启停频度 Life Time | 20 万个周期 200,000 cycles | | |
| 14 | 压缩机内最低油面 Minimum Oil Level | C-SB: 保持在压缩机内下轴承的中部以上 Center of the lower bearing. C-SC: 不低于压缩机下轴承的下端面 Bottom of the lower bearing. | | |
| | | C-SC: 规定封入量的 70% 以上 No less than 70% of the initial oil charge. | | |
| 15 | 异常升压/降压 Abnormal Pressure Rise/Drop | 压力上升: 4.15MPa(G)/[602psig] 以下 Pressure Rise:4.15MPa(G)/[602psig] Max. | | 高压开关设定值 By high pressure switch |
| | | 压力下降: 0.15MPa(G)/[22psig] 以上 Pressure Drop:0.15MPa(G)/[22psig] Min. | | 低压开关设定值 By low pressure switch |
| 16 | 水份 System Moisture Level | 200ppm 以下 Max | | |
| 17 | 不凝性气体 System Uncondensable Gas Level | 1% (容积比)以下 1 Vol.% Max. 残留氧气要求在0.1%(容积比)以下 Residual Oxygen 0.1 Vol.% Max. | | 抽真空 24 小时以后绝对压力应在 1.01kPa 以下 24 hrs. after vacuuming:1.01kPa Max. |
| 18 | 倾斜角度 Tilt | 5° 以内 5°Deg.Max. | | |

■ 超出以上极限范围的运转必须得到我公司的认可。Operation beyond the above limits must be approved by our company.

(G): 表压 Gauge Pressure

■ DC-INV R410A 机型使用标准 Application Standard & Limit (R410A DC Inverter)

为正确使用直流变频涡旋压缩机，对其使用标准、使用极限作如下规定 The following requirements apply to DC Inverter driven vertical type hermetic scroll compressors:使用标准值:适用于常用条件下(日本 JIS B8616, 与 JIS B8616 相关的标准、过载、低温条件下的商品运转条件)的运转。Standard: Applicable to ordinary conditions in Japan JIS B8616 or standards relative to JIS B8616, such as standard rating conditions, maximum operating conditions, low temperature conditions, etc.

| 序号 No. | 项目 Item | 使用标准值 Standard | 备注 Note |
|--------|--|--|---|
| 1 | 制冷剂 Refrigerant | R410A | |
| 2 | 蒸发温度 Evaporating Temp. | -15 ~ +15℃ 0.38 ~ 1.15MPa(G) | 压力指吸气压力 Comp. suction pressure |
| 3 | 冷凝温度 Condensing Temp. | 65℃以下 Max. ~ 4.18MPa(G) | 压力指排气压力 Comp. discharge pressure |
| 4 | 压缩比 Compression Ratio | 2 ~ 8(启动、除霜等除外) 2 ~ 8(not apply to start, defrost conditions) | |
| 5 | 电动机绕组温度 Winding Temp. | 120℃ 以下 Max. | |
| 6 | 压缩机外壳底部温度 Shell Bottom Temp. | 100℃以下 Max. 冷凝温度+0.5K以上 Condensing Temp.+0.5K Min.(comp.running) | |
| 7 | 排气温度 Discharge Gas Temp. | 115℃ 以下 Max. | 压缩机排气管后 10cm 位置温度或者上盖盲孔管内温度 10cm within discharge port or inside of the well pipe on top case |
| 8 | 吸气温度 Suction Gas Temp. | 吸气过热度在5K 以上 Superheat:5K Min. | 压缩机入口 30cm 以内位置的吸气管温度。 Within 30cm of the suction fitting. |
| 9 | 变频器输入电压(运转时) Input Voltage to Inverter(running) | 额定电压 ±20% Rated Voltage ±20% | 运转时变频器输出电压 Output Voltage of DC Inverter (running) |
| 10 | 变频器输入电压(启动时) Input Voltage to Inverter (starting) | 三相: 额定电压 85% 以上 Three Phase Models: 85% of the rated voltage min. | 指在启动电流升高, 电压下降时的变频器电压 Dropped voltage to inverter |
| 11 | 启停周期 On/Off Period | 运转时间: 至少应使油回到指定油位所需的时间 On Period: Until the oil level returns to the specified level | 1周期: 10 分钟以上 停止: 3分钟以上, 运转: 5分钟以上, 'One cycle: 10 mins. For at least 5 minutes-on/3 minutes-off is recommendable. |
| | | 停止时间: 至少应使高低压达到平衡所需的时间 Off Period: Until balance of high and low pressure is obtained. | |
| 12 | 制冷剂注入量 Refrigerant Charge | 制冷剂充入量应尽量少(油/制冷剂重量比推荐为0.35以上) oil/refrigerant(wt.) ≥ 0.35 | 油比重: 0.94 Specific gravity of the Oil: 0.94 |
| 13 | 启停频度 Life Time | 20 万个周期 200,000 cycle | |
| 14 | 压缩机内油面 Minimum Oil Level | 不低于压缩机下轴承的下端面 No less than the bottom of the lower bearing | |
| 15 | 异常升压/降压 Abnormal Pressure Rise/Drop | 压力上升: 4.15MPa(G) 以下 Pressure Rise: 4.15MPa(G) Max. | 高压开关设定值 By high pressure switch |
| | | 压力下降: 0.15MPa(G) 以上 Pressure Drop: 0.15MPa(G) Min. | 低压开关设定值 By low pressure switch |
| 16 | 水份 System Moisture Level | 200ppm 以下 Max. | |
| 17 | 不凝性气体 System Uncondensable Gas Level | 制冷回路中不凝性气体要求在 1% (容积比)以下 1 Vol.% Max 残留氧气要求在 0.1%(容积比)以下 Residual Oxygen 0.1 Vol.% Max. | 抽真空 24 小时以后绝对压力应在 1.01kPa 以下 24 hrs. after vacuuming: 1.01kPa Max. |
| 18 | 倾斜角度 Tilt | 压缩机倾斜最大 5° 以内 5° Deg. Max. | |

■ 超出以上极限范围的运转必须得到我公司的认可。Operation beyond the above limits must be approved by our company.

(G): 表压 Gauge Pressure

■ R407C 机型使用标准 · 使用极限 APPLICATION STANDARD & LIMIT (R407C)

为正确使用立式涡旋压缩机，对其使用标准、使用极限作如下规定 The following requirements apply to Vertical type Hermetic Scroll Compressors:使用标准值 Standard:适用于常用条件下(日本 JIS B8616, 与 JIS B8616 相关标准、过载、低温条件下的商品运转条件)的运转。Applicable to ordinary conditions in Japan JIS B8616 or equivalent conditions, such as standard rating conditions, maximum operating conditions, low temperature conditions, etc.使用极限值 Limit 适用于过渡条件下(启动时、除霜时等)的短时间运转。Applicable to transitional brief periods, such as start-up and beginning of defrost mode.

| 序号 No. | 项目 Item | 使用标准值 Standard | 使用极限值 Limit | 备注 Note |
|--------|---|---|---|--|
| 1 | 制冷剂 Refrigerant | R407C | | |
| 2 | 蒸发温度范围 Evaporating Temp. | -15 ~ +12℃/[5 ~ 54°F] 0.20 ~ 0.65MPa(G)/[29 ~ 94psig] | -25 ~ +15℃/[-13 ~ 59°F] 0.07 ~ 0.73MPa(G)/[10 ~ 106psig] | 蒸发器入口、出口平均温度 Average temp. of evaporator inlet and outlet. |
| 3 | 冷凝温度范围 Condensing Temp. | +30 ~ +60℃/[86 ~ 140°F] 1.17 ~ 2.56MPa(G)/[170 ~ 371psig] | +65℃/[149°F] 2.88MPa(G)/[418psig] | 冷凝器入口、出口平均温度 Average temp. of condensor inlet and outlet. |
| 4 | 压缩比 Compression Ratio | 2 ~ 6 | 10 | |
| 5 | 电动机绕组温度 Winding Temp. | 115℃/[240°F] 以下 Max. | 125℃/[257°F] | |
| 6 | 压缩机外壳底部温度 Shell Bottom Temp. | 上限: 90℃/[194°F] 以下 Upper Limit: 90℃/[194°F] Max. 下限: 蒸发压力相对应饱和温度+12K/[21°F] 以上 Lower Limit: Evaporating Temp.+12K/[21°F] Min. | | 运转时 When compressor is running |
| | | 下限: 环境温度+11K/[20°F] 以上 Lower Limit: Ambient Temp.+11K/[20°F] Min. | | 停机时 When compressor shuts off |
| 7 | 排气温度 Discharge Gas Temp. | 115℃/[240°F] 以下 Max | C-SB: 130℃/[266°F] 以下 Max | 距压缩机出口 10cm 以内位置的排气管温度 Within 100mm(4in) of the discharge fitting. |
| | | | C-SC: 135℃/[275°F] 以下 Max | 压缩机上盖中部的铜管内排气温度保护器的检测温度 Inside of the well pipe on the top of compressor |
| 8 | 吸气温度 Suction Gas Temp. | 吸气过热度在5K/[10°F] 以上 Superheat: 5K/[10°F] Min. | 应无由于液体吸入而引起的冲刷音(不增加电流及振动) No excessive noise. | 距压缩机吸气口 300mm 以内, 应同时满足5, 6, 7和14项的要求。 It should meet the requirement of item 5, 6, 7 and 14 within 300mm of the suction fitting. |
| 9 | 运转时供电电压 Running Voltage | 额定电压 ±10% Within ±10% of the rated voltage. | | 运转时压缩机接线柱电压 Voltage at compressor terminals. |
| 10 | 启动时供电电压 Starting Voltage | 三相机: 额定电压 85% 以上 Three Phase Models: 85% of the rated voltage min. | | 指在启动电流升高, 电压下降时的压缩机接线柱电压 Dropped voltage at compressor terminals. |
| | | 单相机: 额定电压 90% 以上 Single Phase Models: 90% of the rated voltage min. | | |
| 11 | 启停周期 On/Off Period | 运转时间: 至少应使油回到指定油位所需的时间 ON Period: Until the oil level returns to the center of the lower bearing. 停止时间: 至少应使高低压达到平衡所需的时间 OFF Period: Until balance of high and low pressure is obtained. | | 1周期: 10 分钟 停止时间: 以3分钟 左右为标准 For at least 7 minutes-ON/3 minutes-OFF is recommendable |
| 12 | 制冷剂注入量 Refrigerant Charge | 油/制冷剂重量比推荐为 0.35 以上 Oil/Refrigerant(wt.) ≥ 0.35 | | 油比重: 0.94 Specific gravity of the Oil: 0.94 |
| 13 | 启停频度 Life Time | 20 万个周期 200,000 cycles | | |
| 14 | 压缩机内最低油面 Minimum Oil Level | C-SB: 保持在压缩机下轴承的中部以上 Center of the lower bearing. | C-SC: 不低于压缩机下轴承的下端面 Bottom of the lower bearing. | |
| | | C-SC: 规定封入量的 70% 以上 No less than 70% of the initial oil charge. | | |
| 15 | 异常升压/降压 Abnormal Pressure Rise/Drop | 压力上升: 3.20MPa(G)/[464psig] 以下 Pressure Rise: 3.20MPa(G)/[464psig] Max. | 高压开关设定值 By high pressure switch | |
| | | 压力下降: 0.05MPa(G)/[7.3psig] 以上 Pressure Drop: 0.05MPa(G)/[7.3psig] Min. | 低压开关设定值 By low pressure switch | |
| 16 | 水份 System Moisture Level | 200ppm 以下 Max | | |
| 17 | 不凝性气体 System Uncondensable Gas Level | 1% (容积比)以下 1 Vol.% Max. 残留氧气要求在 0.1%(容积比)以下 Residual Oxygen 0.1 Vol.% Max. | | 抽真空 24 小时以后绝对压力应在 1.01kPa 以下 24 hrs. after vacuuming: 1.01kPa Max. |
| 18 | 倾斜角度 Tilt | 5° 以内 5° Deg. Max. | | |

■ 超出以上极限范围的运转必须得到我公司的认可。Operation beyond the above limits must be approved by our company.

(G): 表压 Gauge Pressure

■ R134a 机型使用标准·使用极限 APPLICATION STANDARD & LIMIT(R134a)

为正确使用立式涡旋压缩机，对其使用标准、使用极限作如下规定 The following requirements apply to Vertical type Hermetic Scroll Compressors:
使用标准值 Standard:适用于常用条件下(日本 JIS B8616, 与 JIS B8616 相关标准、过载、低温条件下的商品运转条件)的运转。Applicable to ordinary conditions in Japan JIS B8616 or equivalent conditions,such as standard rating conditions, maximum operating conditions, low temperature conditions,etc.使用极限值 Limit 适用于过渡条件下(启动时、除霜时等)的短时间运转。Applicable to transitional brief periods, such as start-up and beginning of defrost mode.

| 序号 No. | 项目 Item | 使用标准值 Standard | 使用极限值 Limit | 备注 Note |
|--------|---|---|---|---|
| 1 | 制冷剂 Refrigerant | R134a | | |
| 2 | 蒸发温度范围 Evaporating Temp. | -12 ~ +12℃/[10 ~ 54°F] 0.09 ~ 0.34MPa(G)/[13 ~ 49psig] | -15 ~ +15℃/[5 ~ 59°F] 0.06 ~ 0.39MPa(G)/[9 ~ 57psig] | 压力指吸气压力 Compressor Suction Pressure |
| 3 | 冷凝温度范围 Condensing Temp. | +30 ~ +70℃/[86 ~ 158°F] 0.67 ~ 2.02MPa(G)/[97 ~ 293psig] | +75℃/[167°F] 2.26MPa(G)/[328psig] | 压力指排气压力 Compressor Discharge Pressure |
| 4 | 压缩比 Compression Ratio | 2 ~ 6 | 10 | |
| 5 | 电动机绕组温度 Winding Temp. | 115℃/[240°F]以下 Max. | 125℃/[257°F] | |
| 6 | 压缩机外壳底部温度 Shell Bottom Temp. | 上限: 90℃/[194°F]以下 Upper Limit:90℃/[194°F] Max. 下限: 蒸发压力相对应饱和温度+12K/[21°F] 以上 Lower Limit:Evaporating Temp.+12K/[21°F] Min. | | 运转时 When compressor is running |
| | | 下限: 环境温度+11K/[20°F] 以上 Lower Limit:Ambient Temp.+11K/[20°F] Min. | | 停机时 When compressor shuts off |
| 7 | 排气温度 Discharge Gas Temp. | 115℃/[240°F] 以下 Max | C-SB:130℃/[266°F]以下 Max | 距压缩机出口 10cm 以内位置的排气管温度 Within 100mm(4in) of the discharge fitting. |
| | | | C-SC:135℃/[275°F]以下 Max | 压缩机上盖中部的铜管内排气温度保护器的检测温度 Inside of the well pipe on the top of compressor |
| 8 | 吸气温度 Suction Gas Temp. | 吸气过热度在5K/[10°F] 以上 Superheat:5K/[10°F] Min. | 应无由于液体吸入而引起的冲刷音(不增加电流及振动) No excessive noise. | 距压缩机吸气口 300mm 以内,应同时满足5,6,7和14项的要求。 It should meet the requirement of item 5,6,7 and 14 within 300mm of the suction fitting. |
| 9 | 运转时供电电压 Running Voltage | 额定电压 ±10% Within ±10% of the rated voltage. | | 运转时压缩机接线柱电压 Voltage at compressor terminals. |
| 10 | 启动时供电电压 Starting Voltage | 三相机: 额定电压 85% 以上 Three Phase Models:85% of the rated voltage min. | | 指在启动电流升高, 电压下降时的压缩机接线柱电压 Dropped voltage at compressor terminals. |
| | | 单相机: 额定电压 90% 以上 Single Phase Models:90% of the rated voltage min. | | |
| 11 | 启停周期 On/Off Period | 运转时间: 至少应使油回到指定油位所需的时间 ON Period:Until the oil level returns to the center of the lower bearing. 停止时间: 至少应使高低压达到平衡所需的时间 OFF Period:Until balance of high and low pressure is obtained. | | 1周期: 10 分钟 停止时间: 以3分钟左右为标准 For at least 7 minutes-ON/3 minutes-OFF is recommendable |
| 12 | 制冷剂注入量 Refrigerant Charge | 油/制冷剂重量比推荐为 0.35 以上Oil/Refrigerant(wt.)≥0.35 | | 油比重: 0.94 Specific gravity of the Oil:0.94 |
| 13 | 启停频度 Life Time | 20 万个周期 200,000 cycles | | |
| 14 | 压缩机内最低油面 Minimum Oil Level | C-SB: 保持在压缩机内下轴承的中部以上 Center of the lower bearing. C-SB: 不低于压缩机下轴承的下端面 Bottom of the lower bearing. | | |
| | | C-SC: 规定封入量的 70% 以上 No less than 70% of the initial oil charge. | | |
| 15 | 异常升压/降压 Abnormal Pressure Rise/Drop | 压力上升: 2.40MPa(G)/[348psig] 以下 Pressure Rise:2.40MPa(G)/[348psig] Max. | | 高压开关设定值 By high pressure switch |
| | | 压力下降: 0.03MPa(G)/[4.35psig] 以上 Pressure Drop:0.03MPa(G)/[4.35psig] Min. | | 低压开关设定值 By low pressure switch |
| 16 | 水份 System Moisture Level | 200ppm 以下 Max | | |
| 17 | 不凝性气体 System Uncondensable Gas Level | 1% (容积比)以下 1 Vol.% Max. 残留氧气要求在 0.1%(容积比)以下 Residual Oxygen 0.1 Vol.% Max. | | 抽真空 24 小时以后绝对压力应在 1.01kPa 以下 24 hrs. after vacuuming:1.01kPa Max. |
| 18 | 倾斜角度 Tilt | 5° 以内 5°Deg.Max. | | |

■ 超出以上极限范围的运转必须得到我公司的认可。Operation beyond the above limits must be approved by our company.

(G): 表压 Gauge Pressure

■ R22 机型使用标准·使用极限 APPLICATION STANDARD & LIMIT(R22)

为正确使用立式涡旋压缩机，对其使用标准、使用极限作如下规定 The following requirements apply to Vertical type Hermetic Scroll Compressors:
使用标准值 Standard:适用于常用条件下(日本 JIS B8616, 与 JIS B8616 相关标准、过载、低温条件下的商品运转条件)的运转。Applicable to ordinary conditions in Japan JIS B8616 or equivalent conditions,such as standard rating conditions, maximum operating conditions, low temperature conditions,etc.使用极限值 Limit 适用于过渡条件下(启动时、除霜时等)的短时间运转。Applicable to transitional brief periods, such as start-up and beginning of defrost mode.

| 序号 No. | 项目 Item | 使用标准值 Standard | 使用极限值 Limit | 备注 Note |
|--------|---|---|---|---|
| 1 | 制冷剂 Refrigerant | R22(符合日本 JIS K1517标准) R22 (Meet the standard of Japan JIS K1517) | | |
| 2 | 蒸发温度范围 Evaporating Temp. | -15 ~ +12℃/[5 ~ 54°F] 0.20 ~ 0.62MPa(G)/[29 ~ 90psig] | -25 ~ +15℃/[-13 ~ 59°F] 0.10 ~ 0.69MPa(G)/[14.5 ~ 100psig] | 压力指吸气压力 Compressor Suction Pressure |
| 3 | 冷凝温度范围 Condensing Temp. | +30 ~ +65℃/[86 ~ 149°F] 1.09 ~ 2.60MPa(G)/[158 ~ 377psig] | +68℃/[155°F] 2.78MPa(G)/[403psig] | 压力指排气压力 Compressor Discharge Pressure |
| 4 | 压缩比 Compression Ratio | 2 ~ 6 | 10 | |
| 5 | 电动机绕组温度 Winding Temp. | 115℃/[240°F]以下 Max. | 125℃/[257°F] | |
| 6 | 压缩机外壳底部温度 Shell Bottom Temp. | 上限: 90℃/[194°F]以下 Upper Limit:90℃/[194°F] Max. 下限: 蒸发压力相对应饱和温度+12K/[21°F] 以上 Lower Limit:Evaporating Temp.+12K/[21°F] Min. | | 运转时 When compressor is running |
| | | 下限: 环境温度+11K/[20°F] 以上 Lower Limit:Ambient Temp.+11K/[20°F] Min. | | 停机时 When compressor shuts off |
| 7 | 排气温度 Discharge Gas Temp. | 115℃/[240°F] 以下 Max | C-SB:130℃/[266°F]以下 Max | 距压缩机出口 10cm 以内位置的排气管温度 Within 100mm(4in) of the discharge fitting. |
| | | | C-SC:135℃/[275°F]以下 Max | 压缩机上盖中部的铜管内排气温度保护器的检测温度 Inside of the well pipe on the top of compressor |
| 8 | 吸气温度 Suction Gas Temp. | 吸气过热度在5K/[10°F] 以上 Superheat:5K/[10°F] Min. | 应无由于液体吸入而引起的冲刷音(不增加电流及振动) No excessive noise. | 距压缩机吸气口 300mm 以内,应同时满足5,6,7和14项的要求。 It should meet the requirement of item 5,6,7 and 14 within 300mm of the suction fitting. |
| 9 | 运转时供电电压 Running Voltage | 额定电压 ±10% Within ±10% of the rated voltage. | | 运转时压缩机接线柱电压 Voltage at compressor terminals. |
| 10 | 启动时供电电压 Starting Voltage | 三相机: 额定电压 85% 以上 Three Phase Models:85% of the rated voltage min. | | 指在启动电流升高, 电压下降时的压缩机接线柱电压 Dropped voltage at compressor terminals. |
| | | 单相机: 额定电压 90% 以上 Single Phase Models:90% of the rated voltage min. | | |
| 11 | 启停周期 On/Off Period | 运转时间: 至少应使油回到指定油位所需的时间 ON Period:Until the oil level returns to the center of the lower bearing. 停止时间: 至少应使高低压达到平衡所需的时间 OFF Period:Until balance of high and low pressure is obtained. | | 1周期: 10 分钟 停止时间: 以3分钟左右为标准 For at least 7 minutes-ON/3 minutes-OFF is recommendable |
| 12 | 制冷剂注入量 Refrigerant Charge | 油/制冷剂重量比推荐为 0.35 以上Oil/Refrigerant(wt.)≥0.35 | | 油比重: 0.92 Specific gravity of the Oil:0.92 |
| 13 | 启停频度 Life Time | 20 万个周期 200,000 cycles | | |
| 14 | 压缩机内最低油面 Minimum Oil Level | C-SB: 保持在压缩机内下轴承的中部以上 Center of the lower bearing. C-SB: 不低于压缩机下轴承的下端面 Bottom of the lower bearing. | | |
| | | C-SC: 规定封入量的 70% 以上 No less than 70% of the initial oil charge. | | |
| 15 | 异常升压/降压 Abnormal Pressure Rise/Drop | 压力上升: 3.0MPa(G)/[435psig] 以下 Pressure Rise:3.0MPa(G)/[435psig] Max. | | 高压开关设定值 By high pressure switch |
| | | 压力下降: 0.03MPa(G)/[4.4psig] 以上 Pressure Drop:0.03MPa(G)/[4.4psig] Min. | | 低压开关设定值 By low pressure switch |
| 16 | 水份 System Moisture Level | 200ppm 以下 Max | | |
| 17 | 不凝性气体 System Uncondensable Gas Level | 1% (容积比)以下 1 Vol.% Max. 残留氧气要求在 0.1%(容积比)以下 Residual Oxygen 0.1 Vol.% Max. | | 抽真空 24 小时以后绝对压力应在 1.01kPa 以下 24 hrs. after vacuuming:1.01kPa Max. |
| 18 | 倾斜角度 Tilt | 5° 以内 5°Deg.Max. | | |

■ 超出以上极限范围的运转必须得到我公司的认可。Operation beyond the above limits must be approved by our company.

(G): 表压 Gauge Pressure

■压缩机命名法 Model Nomenclatures

① C-SB、C-SBN、C-SC、C-SCV、C-SCN、C-SCVN 型 Type

| | | | | | | | | | | | | | | | | | | |
|--|--|---|---|---|---|--|------------------|-----|-----------------|--|----------------|---|----------------------------|--|---------------|------------|-------------------------|---|
| C-XXXX | AA | B | C | D | E | | | | | | | | | | | | | |
| <table border="1"> <tr> <td>开发代号 Design Code</td> <td>A ~</td> </tr> <tr> <td>电源 Power Source</td> <td>0: 变频 Inverter 200V ± 20% 输入电压 Input Voltage 1: 变频 Inverter 400V ± 20% 输入电压 Input Voltage 3: 50Hz 200V/60Hz 200,220V 5: 50Hz 220,230,240V 6: 60Hz 208,230V 8: 50Hz 380,415V/60Hz,440V 9: 60Hz 380V</td> </tr> <tr> <td>用途 Application</td> <td>H: 高温用 High Back Pressure L: 低温用 Low Back Pressure</td> </tr> <tr> <td>电源(相数) Power Source(Phase)</td> <td>1: 1相 Single Phase 3: 3相 Single Phase</td> </tr> <tr> <td>表示输出功率 Output</td> <td>AA × 100 W</td> </tr> <tr> <td>压缩机制品区分 Compressor Type</td> <td>C-SB: B系列涡旋压缩机 (HCFC 22) C-SBN: B系列涡旋压缩机 (HFC) C-SC: C系列涡旋压缩机 (HCFC 22) C-SCV: C系列变频涡旋压缩机 (HCFC 22) C-SCN: C系列涡旋压缩机 (HFC) C-SCVN: C系列变频涡旋压缩机 (HFC)</td> </tr> </table> | | | | | | | 开发代号 Design Code | A ~ | 电源 Power Source | 0: 变频 Inverter 200V ± 20% 输入电压 Input Voltage 1: 变频 Inverter 400V ± 20% 输入电压 Input Voltage 3: 50Hz 200V/60Hz 200,220V 5: 50Hz 220,230,240V 6: 60Hz 208,230V 8: 50Hz 380,415V/60Hz,440V 9: 60Hz 380V | 用途 Application | H: 高温用 High Back Pressure L: 低温用 Low Back Pressure | 电源(相数) Power Source(Phase) | 1: 1相 Single Phase 3: 3相 Single Phase | 表示输出功率 Output | AA × 100 W | 压缩机制品区分 Compressor Type | C-SB: B系列涡旋压缩机 (HCFC 22) C-SBN: B系列涡旋压缩机 (HFC) C-SC: C系列涡旋压缩机 (HCFC 22) C-SCV: C系列变频涡旋压缩机 (HCFC 22) C-SCN: C系列涡旋压缩机 (HFC) C-SCVN: C系列变频涡旋压缩机 (HFC) |
| 开发代号 Design Code | A ~ | | | | | | | | | | | | | | | | | |
| 电源 Power Source | 0: 变频 Inverter 200V ± 20% 输入电压 Input Voltage 1: 变频 Inverter 400V ± 20% 输入电压 Input Voltage 3: 50Hz 200V/60Hz 200,220V 5: 50Hz 220,230,240V 6: 60Hz 208,230V 8: 50Hz 380,415V/60Hz,440V 9: 60Hz 380V | | | | | | | | | | | | | | | | | |
| 用途 Application | H: 高温用 High Back Pressure L: 低温用 Low Back Pressure | | | | | | | | | | | | | | | | | |
| 电源(相数) Power Source(Phase) | 1: 1相 Single Phase 3: 3相 Single Phase | | | | | | | | | | | | | | | | | |
| 表示输出功率 Output | AA × 100 W | | | | | | | | | | | | | | | | | |
| 压缩机制品区分 Compressor Type | C-SB: B系列涡旋压缩机 (HCFC 22) C-SBN: B系列涡旋压缩机 (HFC) C-SC: C系列涡旋压缩机 (HCFC 22) C-SCV: C系列变频涡旋压缩机 (HCFC 22) C-SCN: C系列涡旋压缩机 (HFC) C-SCVN: C系列变频涡旋压缩机 (HFC) | | | | | | | | | | | | | | | | | |

② C-SBR、C-SBV、C-SBX、C-SBS、C-SBP、C-SCR、C-SCX、C-SCS、C-SCP、C-SDP 型 Type

| | | | | | | | | | | | | | | | |
|--|--|---|----|---|--|------------------|-----|-----------------|--|----------------|---|------------------------|---|-------------------------|--|
| C-XXX | AAA | B | CC | D | | | | | | | | | | | |
| <table border="1"> <tr> <td>开发代号 Design Code</td> <td>A ~</td> </tr> <tr> <td>电源 Power Source</td> <td>00: 交流变频 AC Inverter 400V ± 20% 输入电压 Input Voltage 01: 交流变频 AC Inverter 200V ± 20% 输入电压 Input Voltage 02: 直流变频 DC Inverter 400V ± 20% 输入电压 Input Voltage 03: 直流变频 DC Inverter 200V ± 20% 输入电压 Input Voltage 15: 单相 Single Phase 50Hz 220V,230V,240V 16: 单相 Single Phase 60Hz 208V,230V 33: 三相 Three Phase 50Hz 200V/60Hz 200V,220V 35: 三相 Three Phase 50Hz 220V,230V,240V 36: 三相 Three Phase 60Hz 208V,230V 38: 三相 Three Phase 50Hz 380V,415V/60Hz 440V 39: 三相 Three Phase 60Hz 380V</td> </tr> <tr> <td>用途 Application</td> <td>H: 高温用 High Back Pressure L: 低温用 Low Back Pressure</td> </tr> <tr> <td>名义制冷量 Nominal Capacity</td> <td>AAA × 100 W (60Hz)/(变频机型 For Inverter Type: 90Hz)</td> </tr> <tr> <td>压缩机制品区分 Compressor Type</td> <td>C-SBR: B系列涡旋压缩机 (HCFC 22) C-SBX: B系列高效涡旋压缩机 (HCFC 22) C-SBS: B系列高效涡旋压缩机 (HFC 407C) C-SBP: B系列高效涡旋压缩机 (HFC 410A) C-SCR: C系列涡旋压缩机 (HCFC 22) C-SCX: C系列高效涡旋压缩机 (HCFC 22) C-SCS: C系列高效涡旋压缩机 (HFC 407C) C-SCP: C系列高效涡旋压缩机 (HFC 410A) C-SDP: D系列高效涡旋压缩机 (HFC 410A)</td> </tr> </table> | | | | | | 开发代号 Design Code | A ~ | 电源 Power Source | 00: 交流变频 AC Inverter 400V ± 20% 输入电压 Input Voltage 01: 交流变频 AC Inverter 200V ± 20% 输入电压 Input Voltage 02: 直流变频 DC Inverter 400V ± 20% 输入电压 Input Voltage 03: 直流变频 DC Inverter 200V ± 20% 输入电压 Input Voltage 15: 单相 Single Phase 50Hz 220V,230V,240V 16: 单相 Single Phase 60Hz 208V,230V 33: 三相 Three Phase 50Hz 200V/60Hz 200V,220V 35: 三相 Three Phase 50Hz 220V,230V,240V 36: 三相 Three Phase 60Hz 208V,230V 38: 三相 Three Phase 50Hz 380V,415V/60Hz 440V 39: 三相 Three Phase 60Hz 380V | 用途 Application | H: 高温用 High Back Pressure L: 低温用 Low Back Pressure | 名义制冷量 Nominal Capacity | AAA × 100 W (60Hz)/(变频机型 For Inverter Type: 90Hz) | 压缩机制品区分 Compressor Type | C-SBR: B系列涡旋压缩机 (HCFC 22) C-SBX: B系列高效涡旋压缩机 (HCFC 22) C-SBS: B系列高效涡旋压缩机 (HFC 407C) C-SBP: B系列高效涡旋压缩机 (HFC 410A) C-SCR: C系列涡旋压缩机 (HCFC 22) C-SCX: C系列高效涡旋压缩机 (HCFC 22) C-SCS: C系列高效涡旋压缩机 (HFC 407C) C-SCP: C系列高效涡旋压缩机 (HFC 410A) C-SDP: D系列高效涡旋压缩机 (HFC 410A) |
| 开发代号 Design Code | A ~ | | | | | | | | | | | | | | |
| 电源 Power Source | 00: 交流变频 AC Inverter 400V ± 20% 输入电压 Input Voltage 01: 交流变频 AC Inverter 200V ± 20% 输入电压 Input Voltage 02: 直流变频 DC Inverter 400V ± 20% 输入电压 Input Voltage 03: 直流变频 DC Inverter 200V ± 20% 输入电压 Input Voltage 15: 单相 Single Phase 50Hz 220V,230V,240V 16: 单相 Single Phase 60Hz 208V,230V 33: 三相 Three Phase 50Hz 200V/60Hz 200V,220V 35: 三相 Three Phase 50Hz 220V,230V,240V 36: 三相 Three Phase 60Hz 208V,230V 38: 三相 Three Phase 50Hz 380V,415V/60Hz 440V 39: 三相 Three Phase 60Hz 380V | | | | | | | | | | | | | | |
| 用途 Application | H: 高温用 High Back Pressure L: 低温用 Low Back Pressure | | | | | | | | | | | | | | |
| 名义制冷量 Nominal Capacity | AAA × 100 W (60Hz)/(变频机型 For Inverter Type: 90Hz) | | | | | | | | | | | | | | |
| 压缩机制品区分 Compressor Type | C-SBR: B系列涡旋压缩机 (HCFC 22) C-SBX: B系列高效涡旋压缩机 (HCFC 22) C-SBS: B系列高效涡旋压缩机 (HFC 407C) C-SBP: B系列高效涡旋压缩机 (HFC 410A) C-SCR: C系列涡旋压缩机 (HCFC 22) C-SCX: C系列高效涡旋压缩机 (HCFC 22) C-SCS: C系列高效涡旋压缩机 (HFC 407C) C-SCP: C系列高效涡旋压缩机 (HFC 410A) C-SDP: D系列高效涡旋压缩机 (HFC 410A) | | | | | | | | | | | | | | |

注意 Notes

- 压缩机在开封状态下，请勿放置15分钟以上。
Installation should be completed within 15 minutes after removing the rubber plugs.
- 请勿压缩空气。Do not use the compressor to compress air.
- 在真空状态下请勿通电。Do not energize the compressor under vacuumed condition.
- 抽真空和制冷剂充注：由制冷系统的高低压两侧同时抽真空，由冷凝器的出口侧充入液态制冷剂。追加制冷剂需以气态形式由低压侧充入。
Evacuation and Refrigerant charge: Evacuate internal section in the refrigeration system from high and low pressure sides and charge liquid refrigerant from condenser outlet side. Additional charge shall be done with gas condition from low side.
- 搬运时请勿倾斜和滑落。Do not tilt over the compressor while carrying it.
- 请勿划伤保护漆。Do not remove the paint.
- 当使用标准中第6项不能保证时，需要加装曲轴箱加热器。
Crankcase heater is required when the oil sump temperature is too low to meet the requirement of item 6.
- 运转时，各相间的电压偏差应在额定电压的2%以内。
Voltage fluctuation between compressor terminals, during operation, shall be within 2% of the rated voltage.
- 请勿反向运转。Do not operate compressor in reverse rotational direction.
- 建议加装吸气过滤器。Suction strainers are recommended for all applications.
- 铜管应力 Copper Piping Stress
开机 Start/停止 Shutdown 34.32 N/mm² 最大 Max.
运转 Run 12.26 N/mm² 最大 Max.

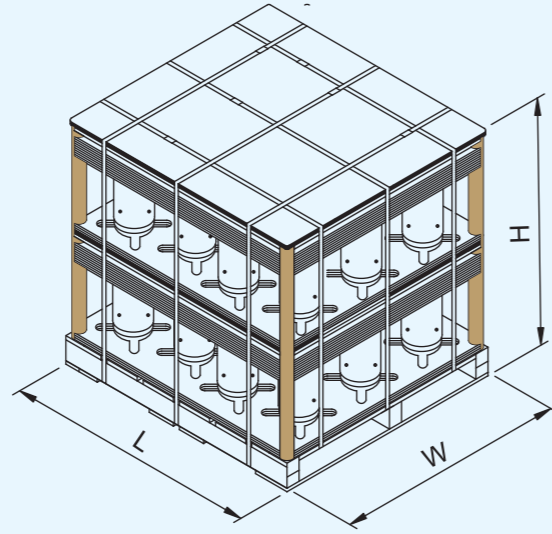
■压缩机命名法 Model Nomenclatures

③

| | | | | | | | | | | | | | | | | | | |
|---|---|-----|---|----|---|--|------------------------------|---|------------------|---------|-----------------|---|---|--|-------------------------|--|-----------------|--|
| 5 | CD | 058 | Z | A0 | 2 | | | | | | | | | | | | | |
| <table border="1"> <tr> <td>应用类型代号 Application Type Code</td> <td>1: 常规机型 Standard Compressor 2: 中间补气机型 Vapor Injection Compressor</td> </tr> <tr> <td>开发代号 Design Code</td> <td>A0 ~ ZZ</td> </tr> <tr> <td>电源 Power Source</td> <td>E: 单相 Single Phase 50Hz 220V-240V F: 单相 Single Phase 50Hz 208V-230V J: 三相 Three Phase 50Hz 200V/60Hz 200-220V K: 三相 Three Phase 50Hz 220V-240V L: 三相 Three Phase 50Hz 380V-415V/60Hz 440-460V P: 三相 Three Phase 50Hz 380V Q: 三相 Three Phase 60Hz 208V-230V R: 三相 Three Phase 50Hz 380V-415V/60Hz 440V S: 三相 Three Phase 50Hz 380V-415V V: 三相 Three Phase 60Hz 440V-460V W: 三相 Three Phase 60Hz 380V M: 交流变频 AC Inverter, 输入电压 Input Voltage 200V级 N: 交流变频 AC Inverter, 输入电压 Input Voltage 400V级 X: 直流变频 DC Inverter, 输入电压 Input Voltage 200V级 Z: 直流变频 DC Inverter, 输入电压 Input Voltage 400V级</td> </tr> <tr> <td>排气量 Displacement (cm³/rev)</td> <td>例e.g. 084: 压缩机设计排气容积 84cm³/rev Compressor design displacement 84cm³/rev</td> </tr> <tr> <td>压缩机系列 Compressor Series</td> <td>CB: B系列涡旋压缩机 (B Series) CC: C系列涡旋压缩机 (C Series) CD: D系列涡旋压缩机 (D Series) CE: E系列涡旋压缩机 (E Series)</td> </tr> <tr> <td>制冷剂 Refrigerant</td> <td>2: R22 4: R407C 5: R410A 6: R134a 9: R32</td> </tr> </table> | | | | | | | 应用类型代号 Application Type Code | 1: 常规机型 Standard Compressor 2: 中间补气机型 Vapor Injection Compressor | 开发代号 Design Code | A0 ~ ZZ | 电源 Power Source | E: 单相 Single Phase 50Hz 220V-240V F: 单相 Single Phase 50Hz 208V-230V J: 三相 Three Phase 50Hz 200V/60Hz 200-220V K: 三相 Three Phase 50Hz 220V-240V L: 三相 Three Phase 50Hz 380V-415V/60Hz 440-460V P: 三相 Three Phase 50Hz 380V Q: 三相 Three Phase 60Hz 208V-230V R: 三相 Three Phase 50Hz 380V-415V/60Hz 440V S: 三相 Three Phase 50Hz 380V-415V V: 三相 Three Phase 60Hz 440V-460V W: 三相 Three Phase 60Hz 380V M: 交流变频 AC Inverter, 输入电压 Input Voltage 200V级 N: 交流变频 AC Inverter, 输入电压 Input Voltage 400V级 X: 直流变频 DC Inverter, 输入电压 Input Voltage 200V级 Z: 直流变频 DC Inverter, 输入电压 Input Voltage 400V级 | 排气量 Displacement (cm ³ /rev) | 例e.g. 084: 压缩机设计排气容积 84cm ³ /rev Compressor design displacement 84cm ³ /rev | 压缩机系列 Compressor Series | CB: B系列涡旋压缩机 (B Series) CC: C系列涡旋压缩机 (C Series) CD: D系列涡旋压缩机 (D Series) CE: E系列涡旋压缩机 (E Series) | 制冷剂 Refrigerant | 2: R22 4: R407C 5: R410A 6: R134a 9: R32 |
| 应用类型代号 Application Type Code | 1: 常规机型 Standard Compressor 2: 中间补气机型 Vapor Injection Compressor | | | | | | | | | | | | | | | | | |
| 开发代号 Design Code | A0 ~ ZZ | | | | | | | | | | | | | | | | | |
| 电源 Power Source | E: 单相 Single Phase 50Hz 220V-240V F: 单相 Single Phase 50Hz 208V-230V J: 三相 Three Phase 50Hz 200V/60Hz 200-220V K: 三相 Three Phase 50Hz 220V-240V L: 三相 Three Phase 50Hz 380V-415V/60Hz 440-460V P: 三相 Three Phase 50Hz 380V Q: 三相 Three Phase 60Hz 208V-230V R: 三相 Three Phase 50Hz 380V-415V/60Hz 440V S: 三相 Three Phase 50Hz 380V-415V V: 三相 Three Phase 60Hz 440V-460V W: 三相 Three Phase 60Hz 380V M: 交流变频 AC Inverter, 输入电压 Input Voltage 200V级 N: 交流变频 AC Inverter, 输入电压 Input Voltage 400V级 X: 直流变频 DC Inverter, 输入电压 Input Voltage 200V级 Z: 直流变频 DC Inverter, 输入电压 Input Voltage 400V级 | | | | | | | | | | | | | | | | | |
| 排气量 Displacement (cm ³ /rev) | 例e.g. 084: 压缩机设计排气容积 84cm ³ /rev Compressor design displacement 84cm ³ /rev | | | | | | | | | | | | | | | | | |
| 压缩机系列 Compressor Series | CB: B系列涡旋压缩机 (B Series) CC: C系列涡旋压缩机 (C Series) CD: D系列涡旋压缩机 (D Series) CE: E系列涡旋压缩机 (E Series) | | | | | | | | | | | | | | | | | |
| 制冷剂 Refrigerant | 2: R22 4: R407C 5: R410A 6: R134a 9: R32 | | | | | | | | | | | | | | | | | |

■包装 Packing

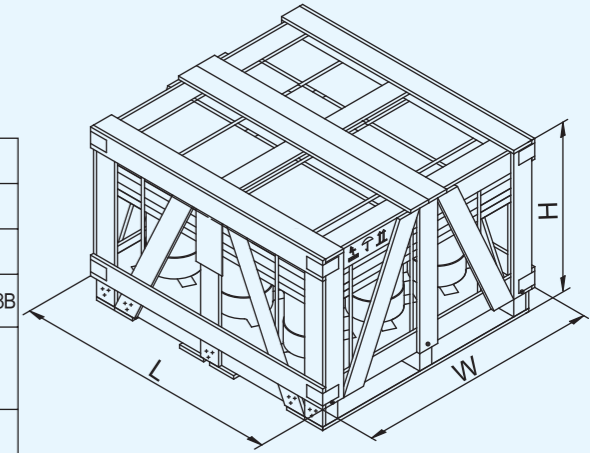
| | | | | | |
|-------------------|--|------------------------------|------------------------------|----------|--------------|
| B 系列 series | 标准包装 Standard Package (24台) (24units) | 尺寸 Dimension (mm) | L | 1100 | 1100 |
| | | | W | 1000 | 1000 |
| | | | H | 1086 | 1120 |
| | | | 代表型号 Typical model | 80985088 | C-SBV180H00A |
| | 集装箱 FCL (20") | 包装箱数 Packages in total | 24台包装箱 24units Package | 20 | 20 |
| 备注 Remark | 最大2层运输及存贮 Two layers both for transportation and storage(at most) | | | | |



B系列外包装图(24台包装)
B series Packaging Drawing (24units Package)

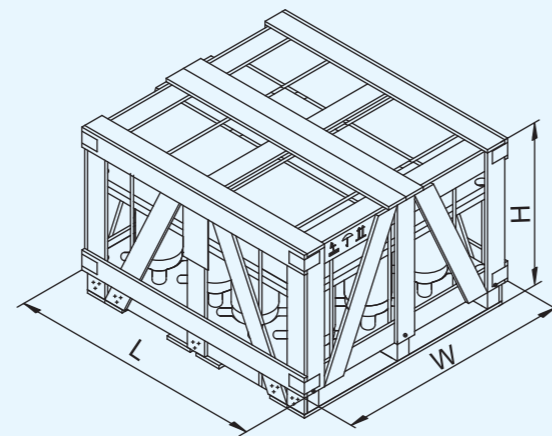
■包装 Packing

| | | | | | | |
|-------------------|--|------------------------------|----------------------------|------------|--------------|--------------|
| C 系列 series | 标准包装 Standard Package (9台) (9units) | 尺寸 Dimension (mm) | L | 1160 | 1160 | 1160 |
| | | | W | 1060 | 1060 | 1060 |
| | | | H | 760 | 775 | 795 |
| | | | 代表型号 Typical model | C-SC903H8H | C-SCX435H38B | C-SCP510H38B |
| | 集装箱 PCL (20") | 包装箱数 Packages in total | 9台包装箱 9units Package | 30 | 30 | 30 |
| 备注 Remark | 最大3层运输及存贮 Three layers both for transportation and storage(at most) | | | | | |



C系列外包装图
C series Packaging Drawing

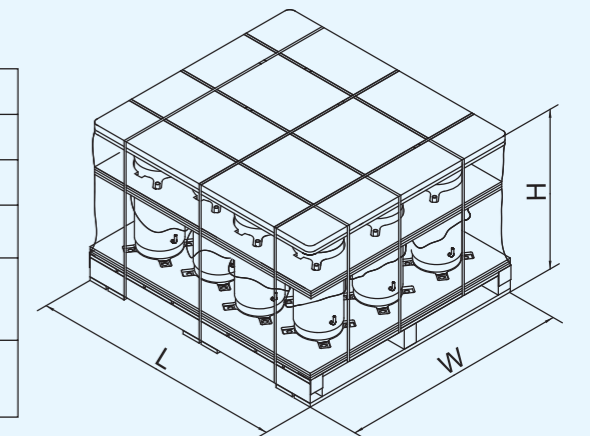
| | | | | | |
|-------------------|--|------------------------------|------------------------------|----------|--------------|
| B 系列 series | 单层包装 Small Package (12台) (12units) | 尺寸 Dimension (mm) | L | 1148 | 1148 |
| | | | W | 1030 | 1030 |
| | | | H | 740 | 740 |
| | | | 代表型号 Typical model | 80985068 | C-SBR180H38Q |
| | 集装箱 FCL (20") | 包装箱数 Packages in total | 12台包装箱 12units Package | 30 | 30 |
| 备注 Remark | 最大3层运输及存贮 Three layers both for transportation and storage(at most) | | | | |



B系列外包装图(12台包装)
B series Packaging Drawing (12units Package)

注：此包装只针对指定机型使用。
Note: This packing is only applied to specified models.

| | | | | | |
|-------------------|--|------------------------------|------------------------------|--------------|--------------|
| D 系列 series | 标准包装 Standard Package (12台) (12units) | 尺寸 Dimension (mm) | L | 1100 | 1100 |
| | | | W | 1000 | 1000 |
| | | | H | 660 | 700 |
| | | | 代表型号 Typical model | C-SDP205H02B | C-SDP205H38B |
| | 集装箱 FCL (20") | 包装箱数 Packages in total | 12台包装箱 12units Package | 30 | 30 |
| 备注 Remark | 最大3层运输及存贮 Three layers both for transportation and storage(at most) | | | | |



D系列外包装图
D series Packaging Drawing

